

## Supplementary Material

*Natural Hazards and Earth System Sciences*

# High-spatial resolution probability maps of drought duration and magnitude across Spain

Fernando Domínguez-Castro<sup>1</sup>, Sergio M. Vicente-Serrano<sup>1</sup>, Miquel Tomás-Burguera<sup>2</sup>, Marina Peña-Gallardo<sup>1</sup>, Santiago Beguería<sup>2</sup>, Ahmed El Kenawy<sup>1,3</sup>, Yolanda Luna<sup>4</sup>, Ana Morata<sup>4</sup>

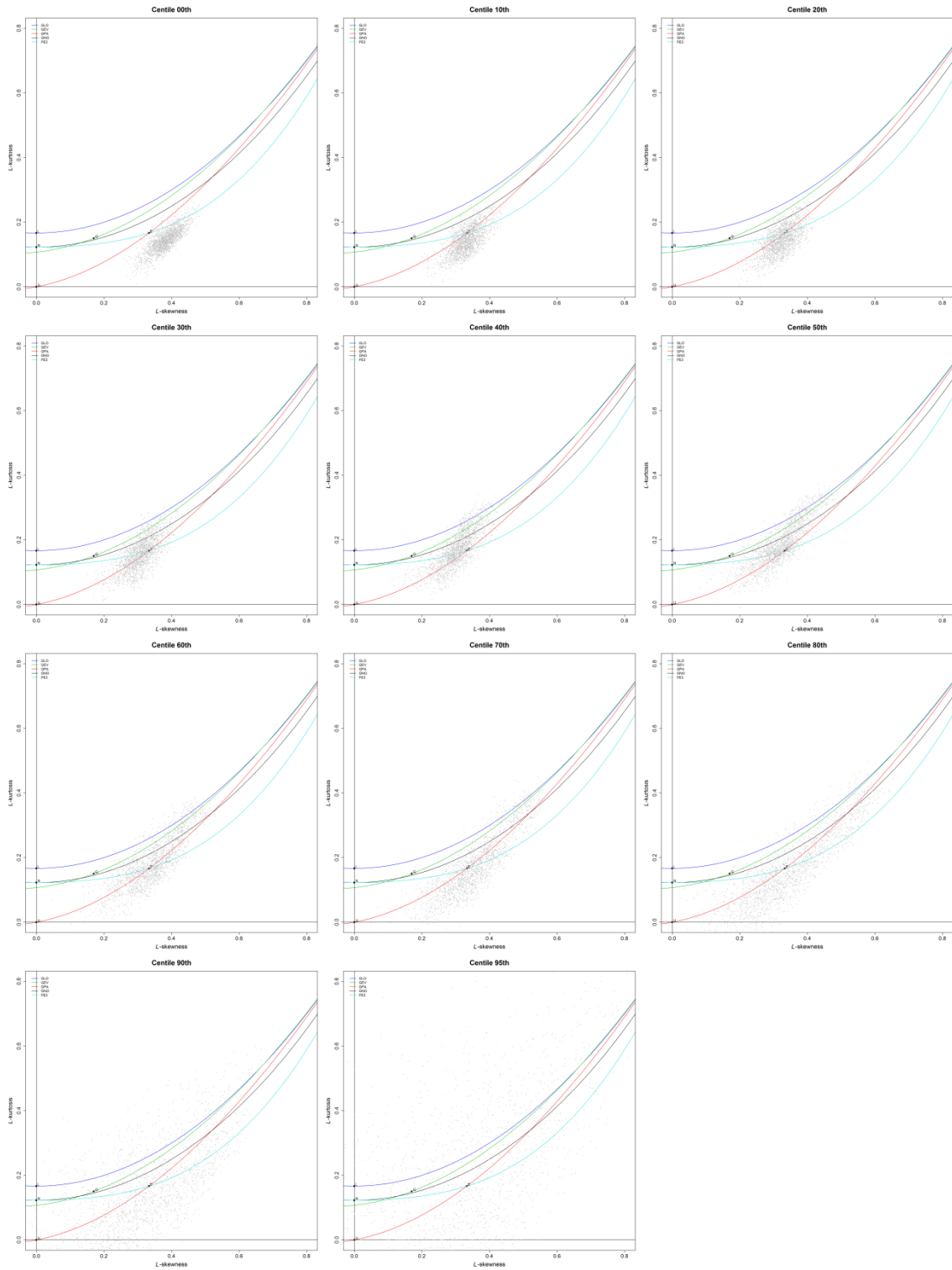
<sup>1</sup>Instituto Pirenaico de Ecología, Spanish National Research Council (IPE-CSIC), Zaragoza, 50059, Spain

<sup>2</sup>Estación Experimental de Aula Dei, Spanish National Research Council (EEAD-CSIC), Zaragoza, 50059, Spain

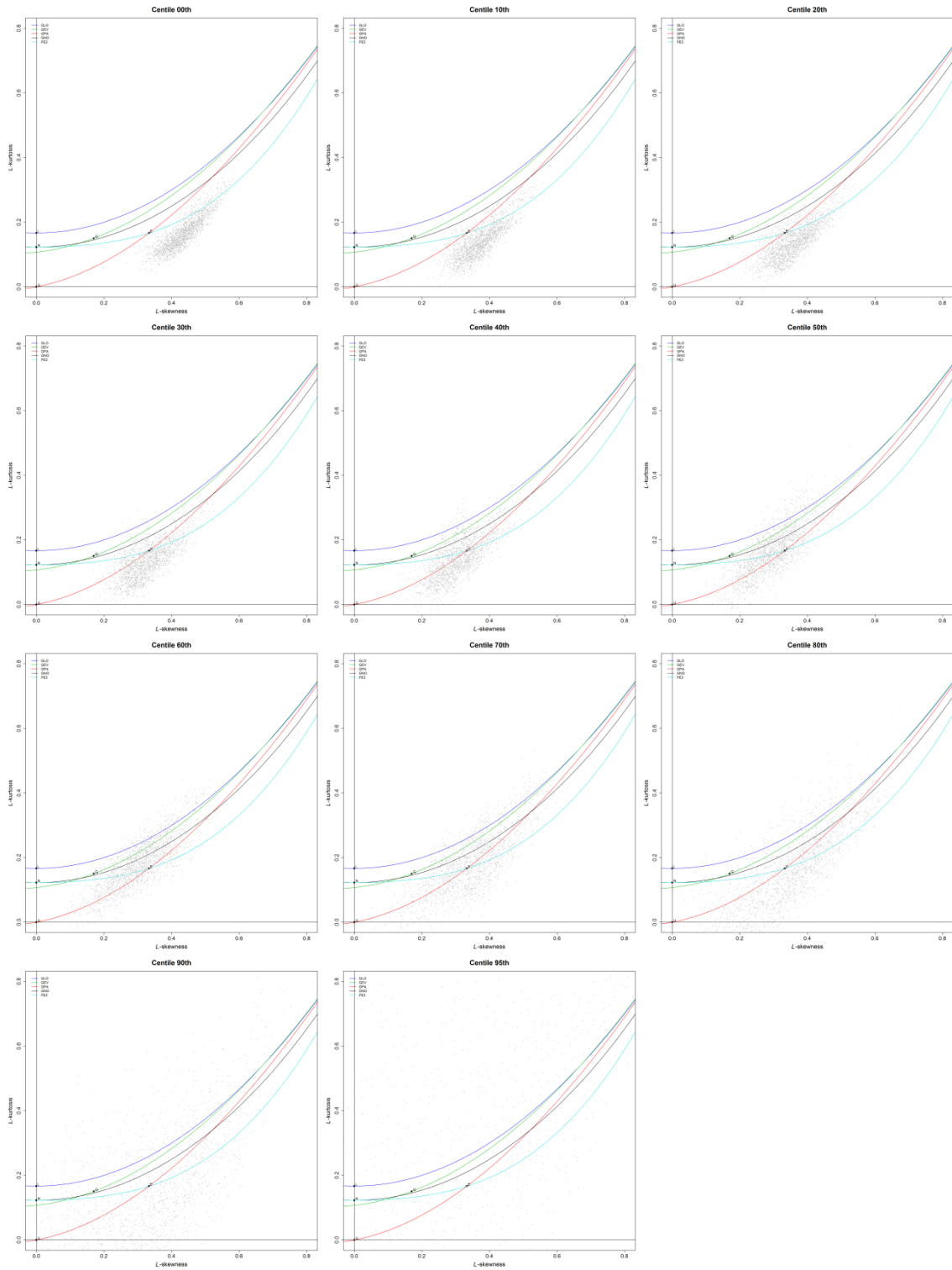
<sup>3</sup>Department of Geography, Mansoura University, Mansoura, 35516, Egypt

<sup>4</sup>Agencia Estatal de Meteorología (AEMET), Madrid, 28071, Spain

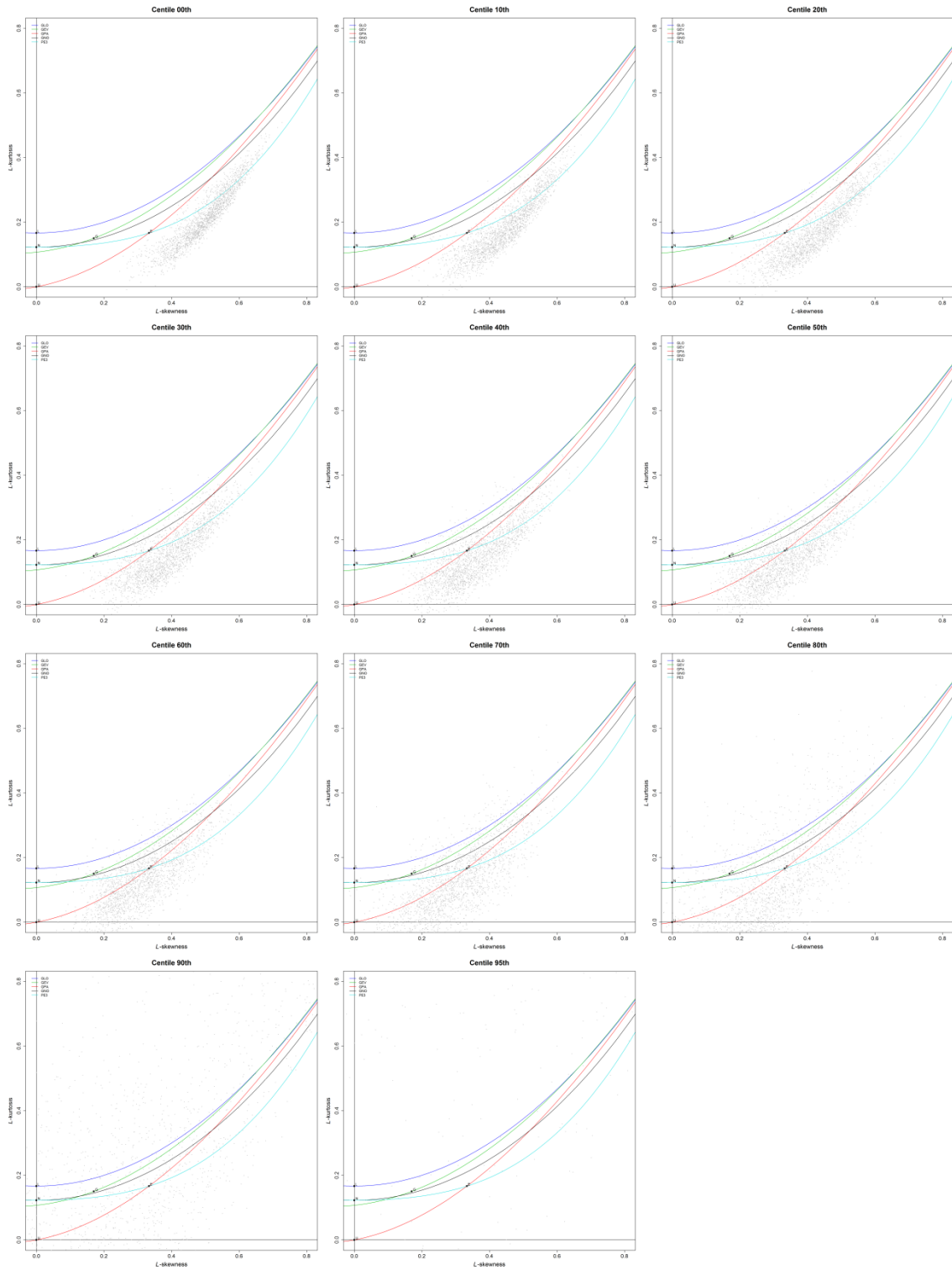
*Correspondence to:* Fernando Domínguez-Castro (f.dominguez.castro@gmail.com)



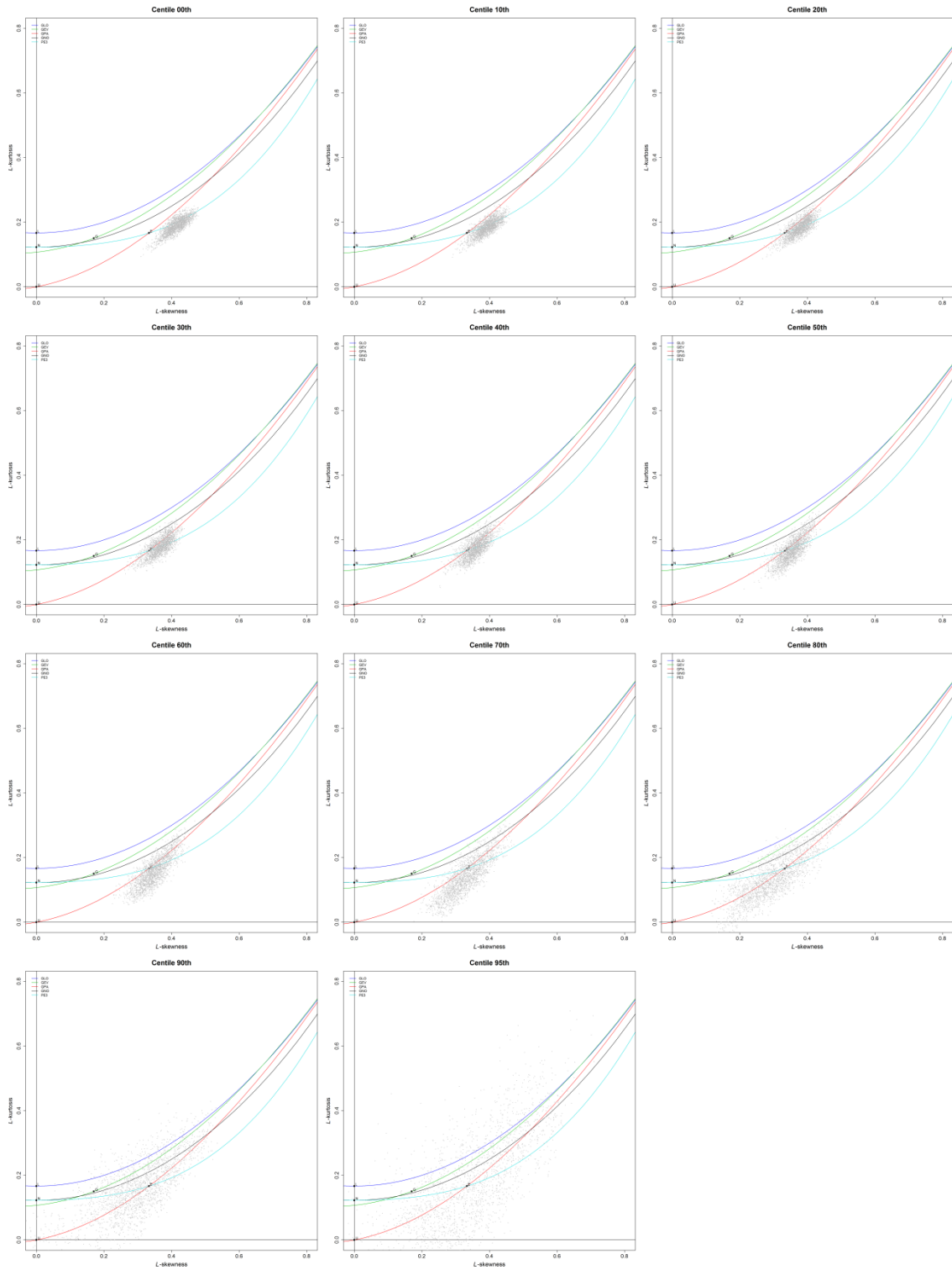
**Supplementary Figure 1: L-moment diagrams for the peak-over-threshold series obtained from the 3-month SPEI duration series**



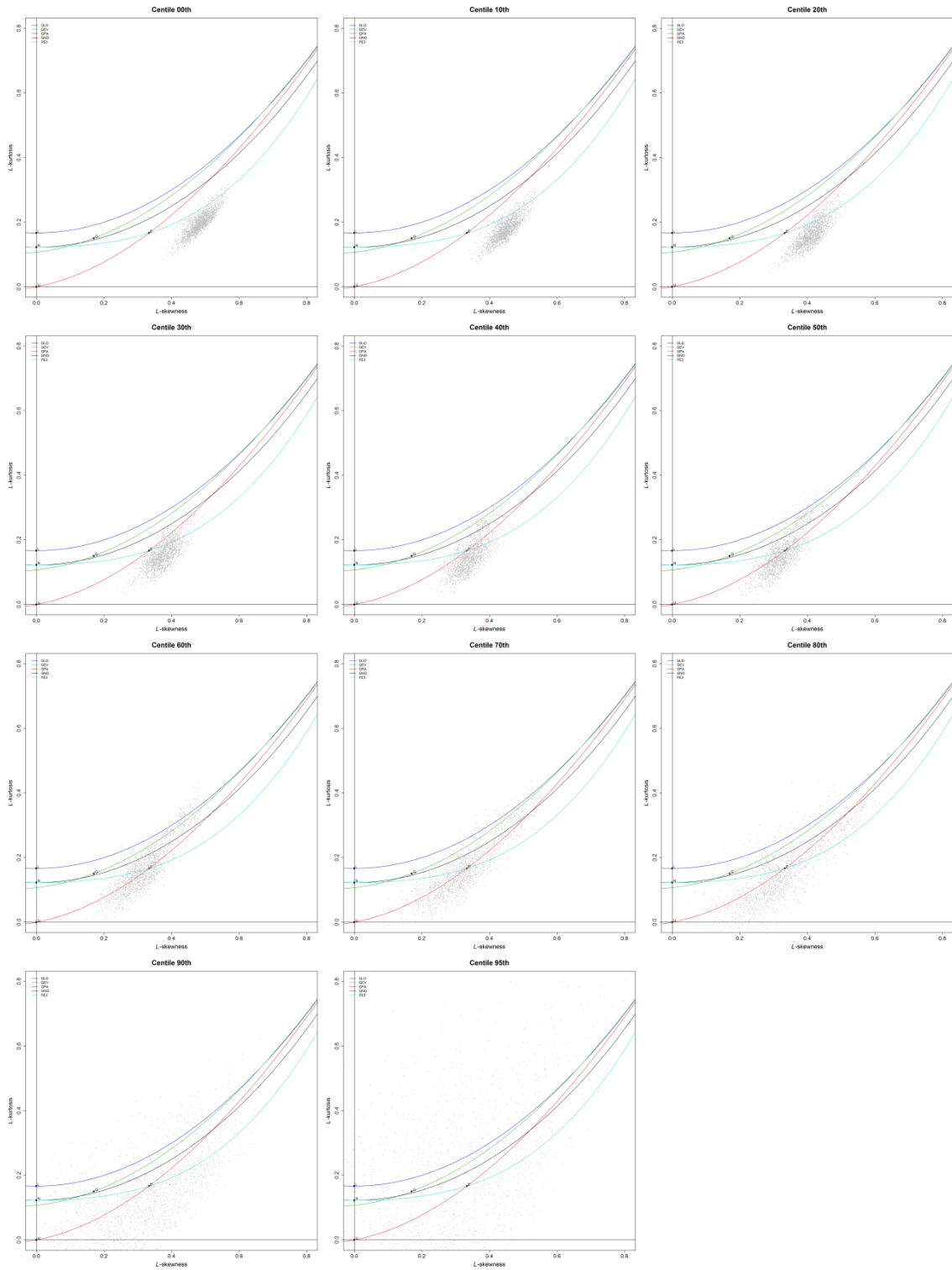
**Supplementary Figure 2: L-moment diagrams for the peak-over-threshold series obtained from the 6-month SPEI duration series**



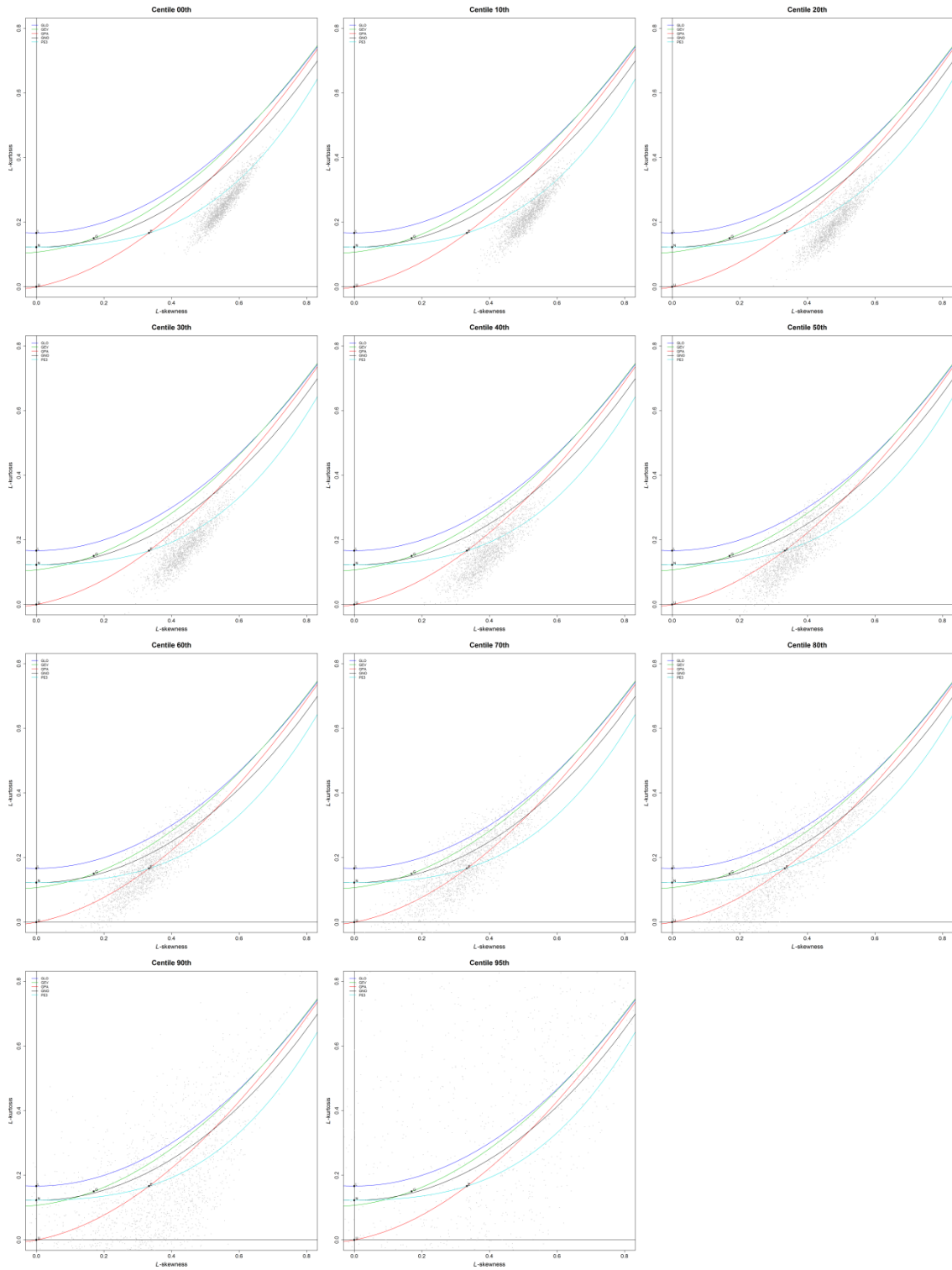
**Supplementary Figure 3: L-moment diagrams for the peak-over-threshold series obtained from the 12-month SPEI duration series**



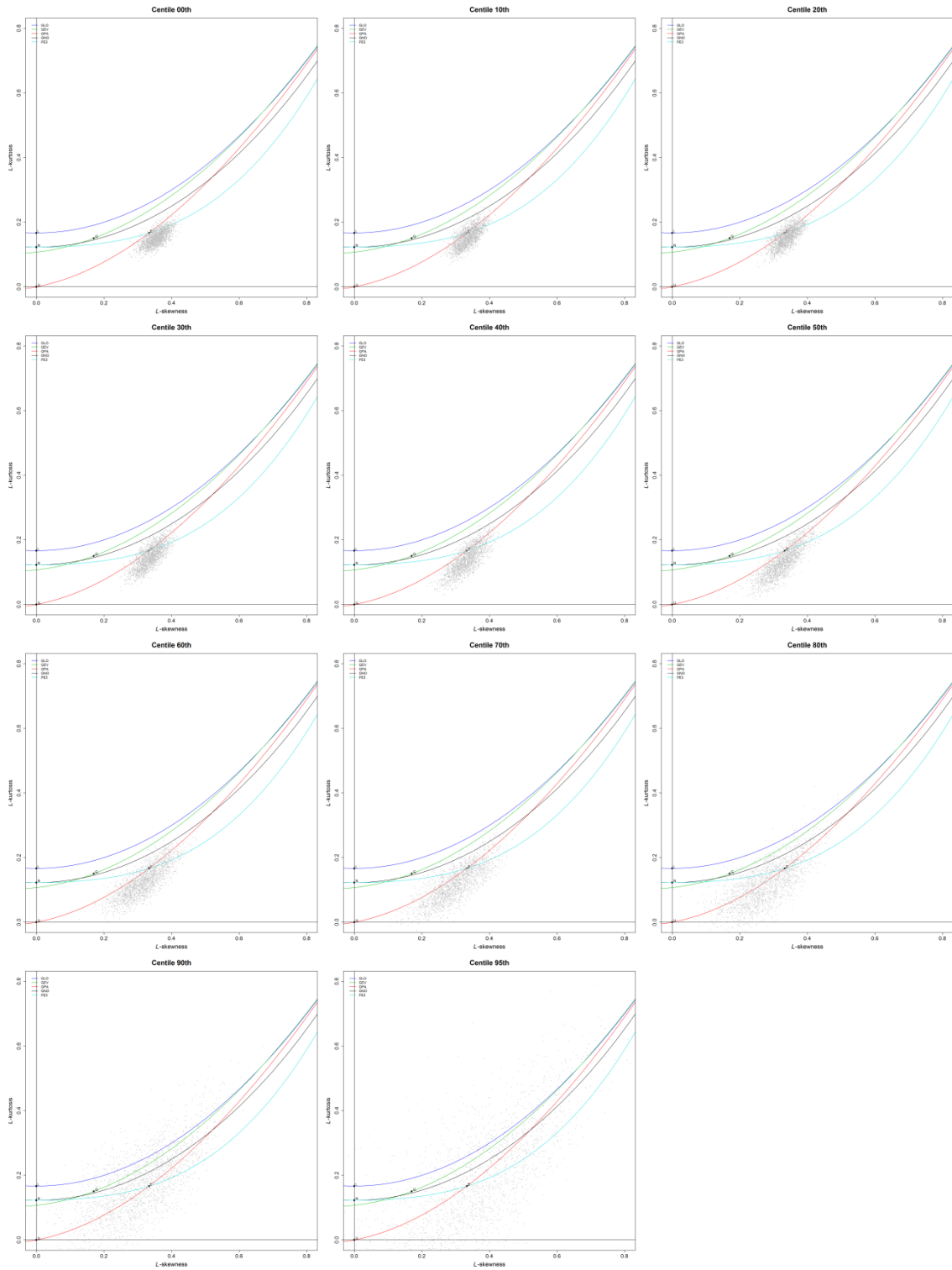
**Supplementary Figure 4: L-moment diagrams for the peak-over-threshold series obtained from the 1-month SPEI magnitude series**



**Supplementary Figure 5: L-moment diagrams for the peak-over-threshold series obtained from the 3-month SPEI magnitude series**

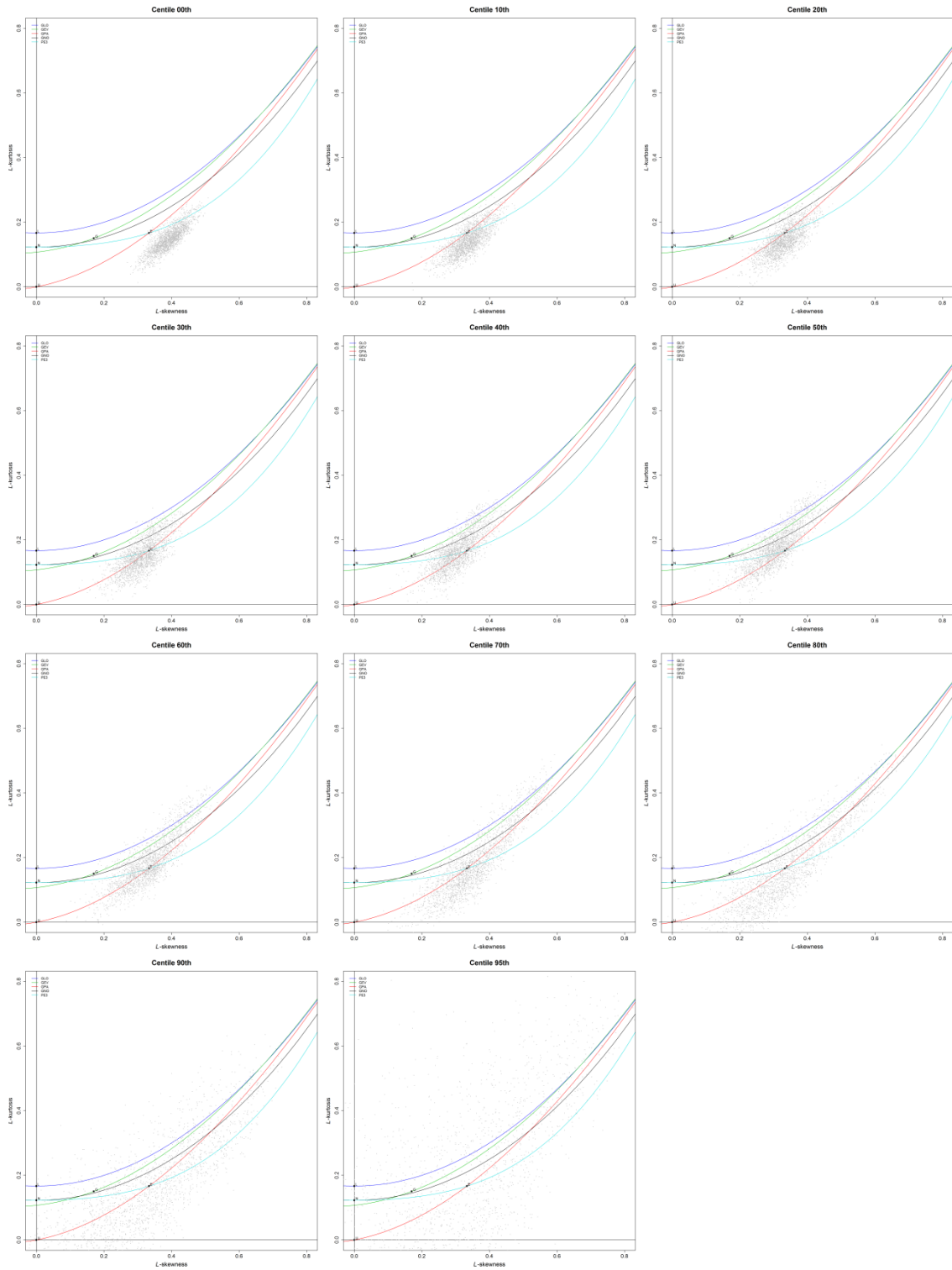


**Supplementary Figure 6: L-moment diagrams for the peak-over-threshold series obtained from the 6-month SPEI magnitude series**

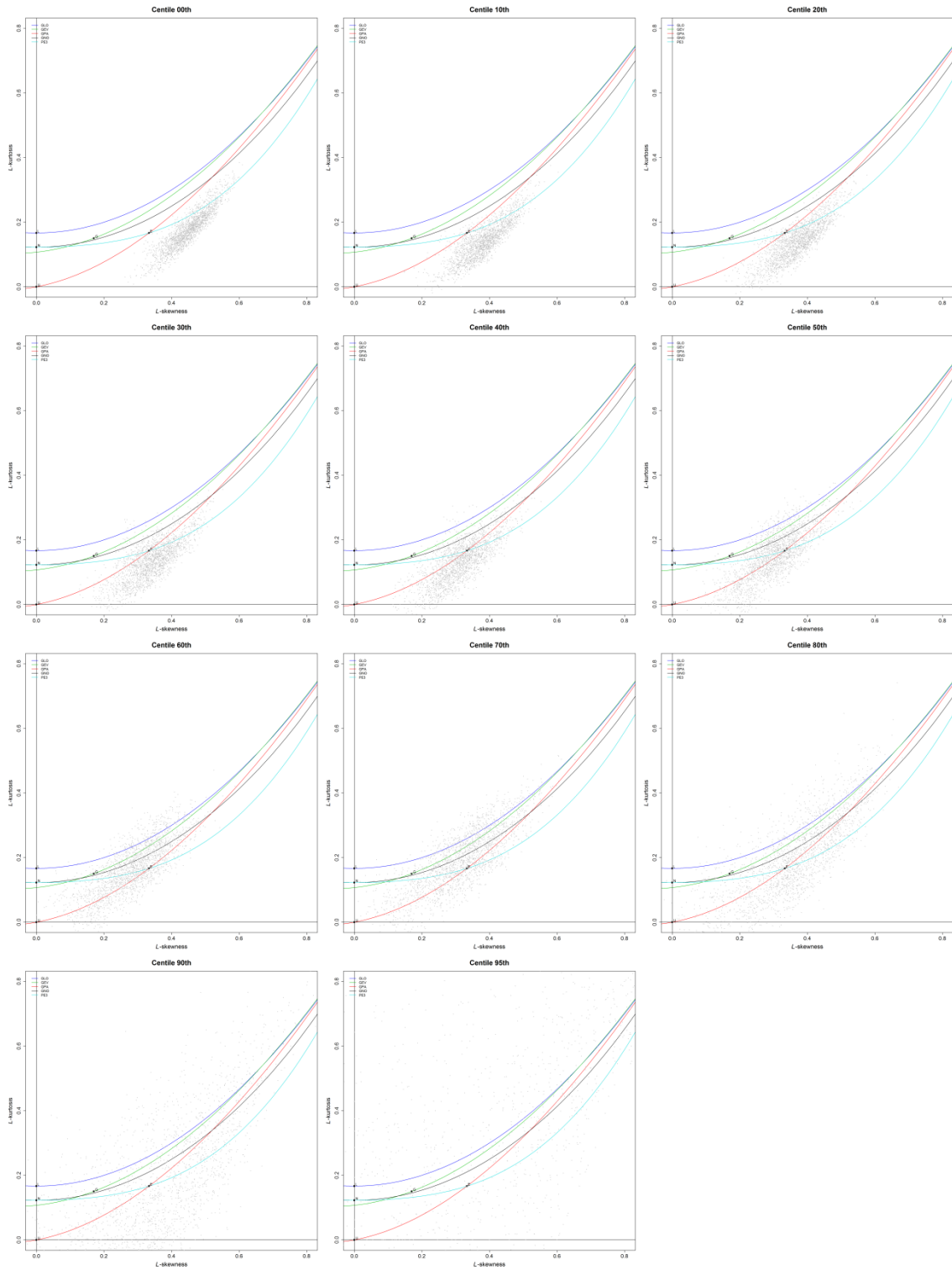


**Supplementary Figure 7: L-moment diagrams for the peak-over-threshold series obtained from the 1-month SPI duration series**

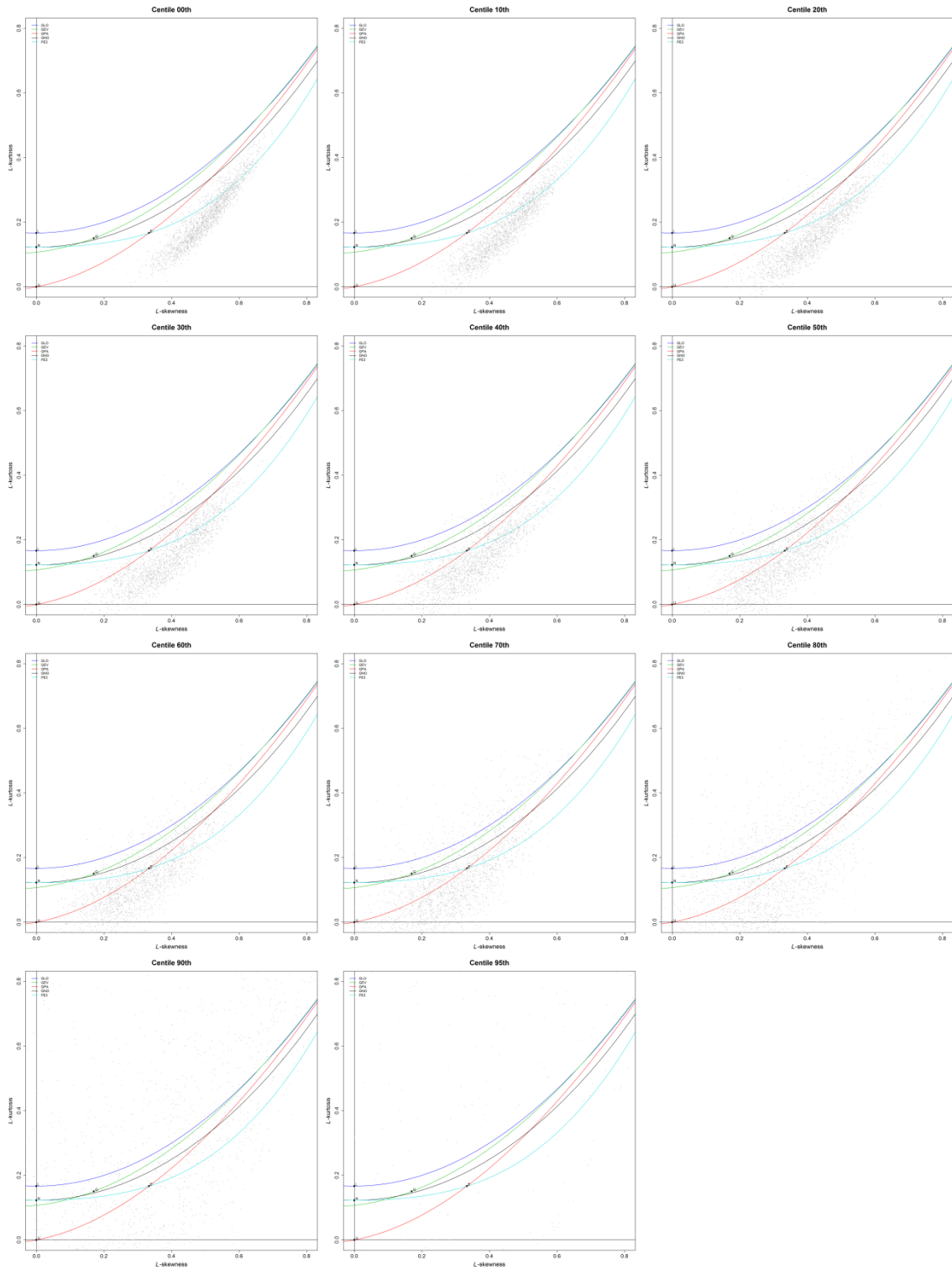




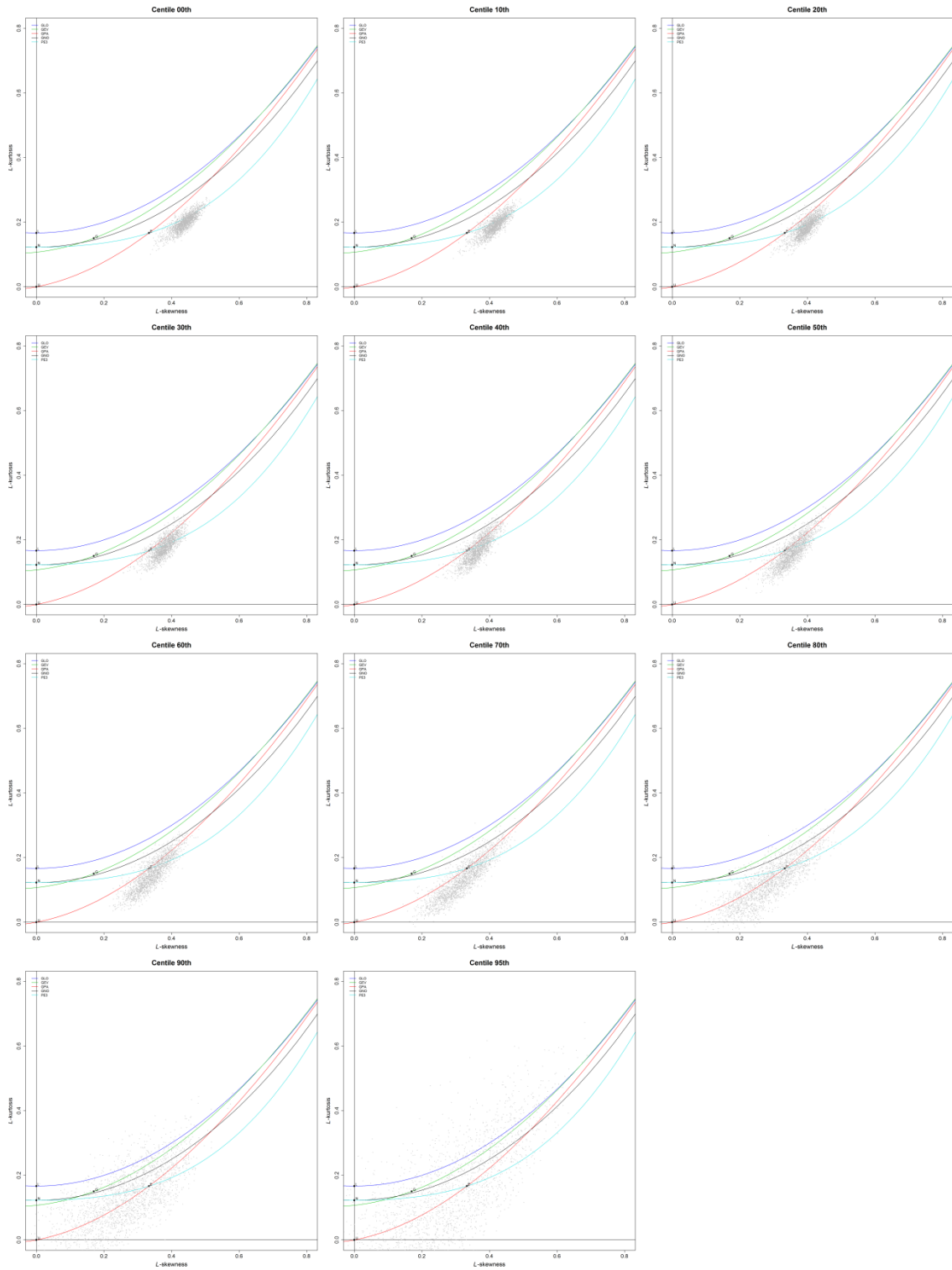
**Supplementary Figure 8: L-moment diagrams for the peak-over-threshold series obtained from the 3-month SPI duration series**



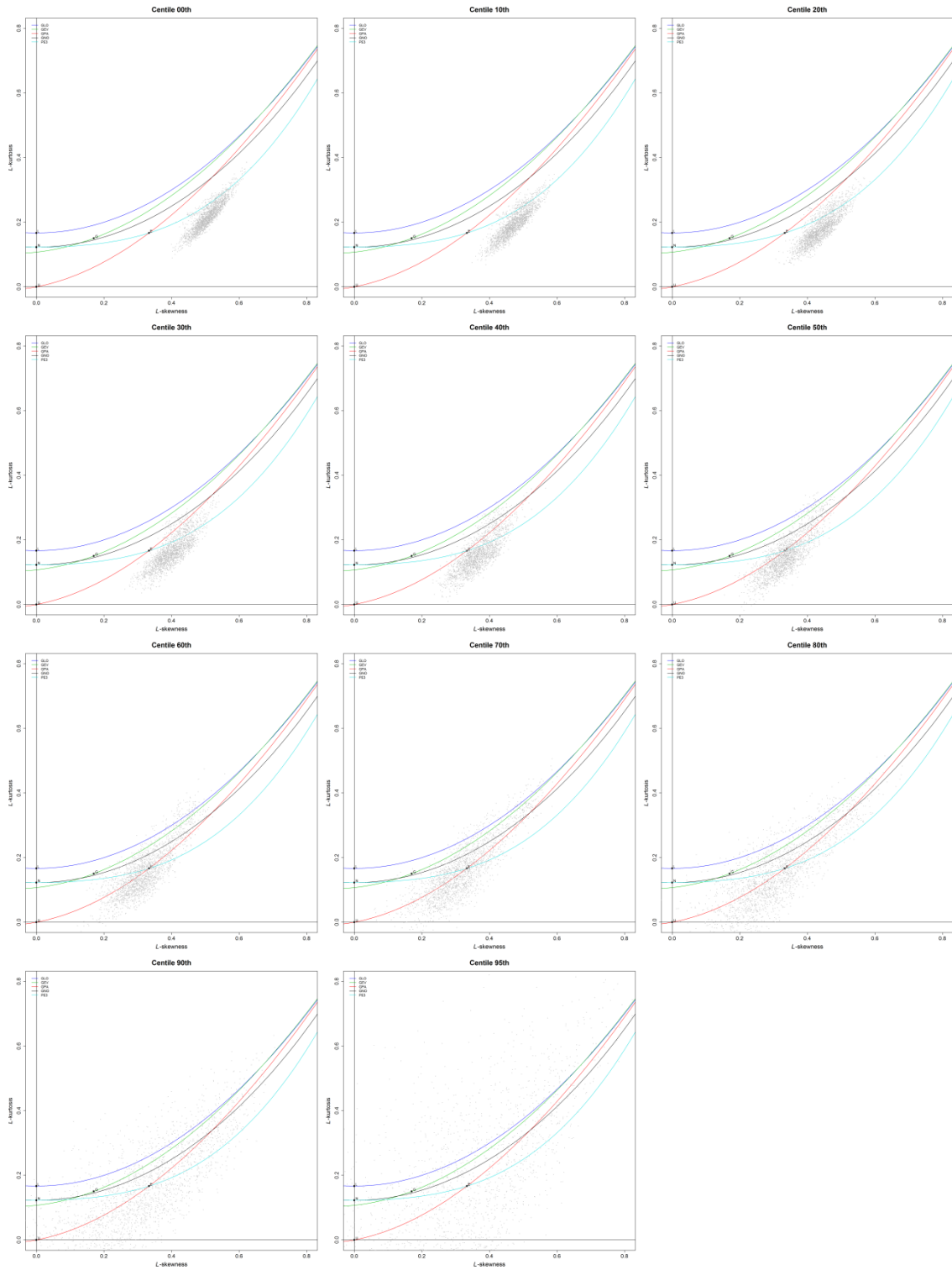
**Supplementary Figure 9: L-moment diagrams for the peak-over-threshold series obtained from the 6-month SPI duration series**



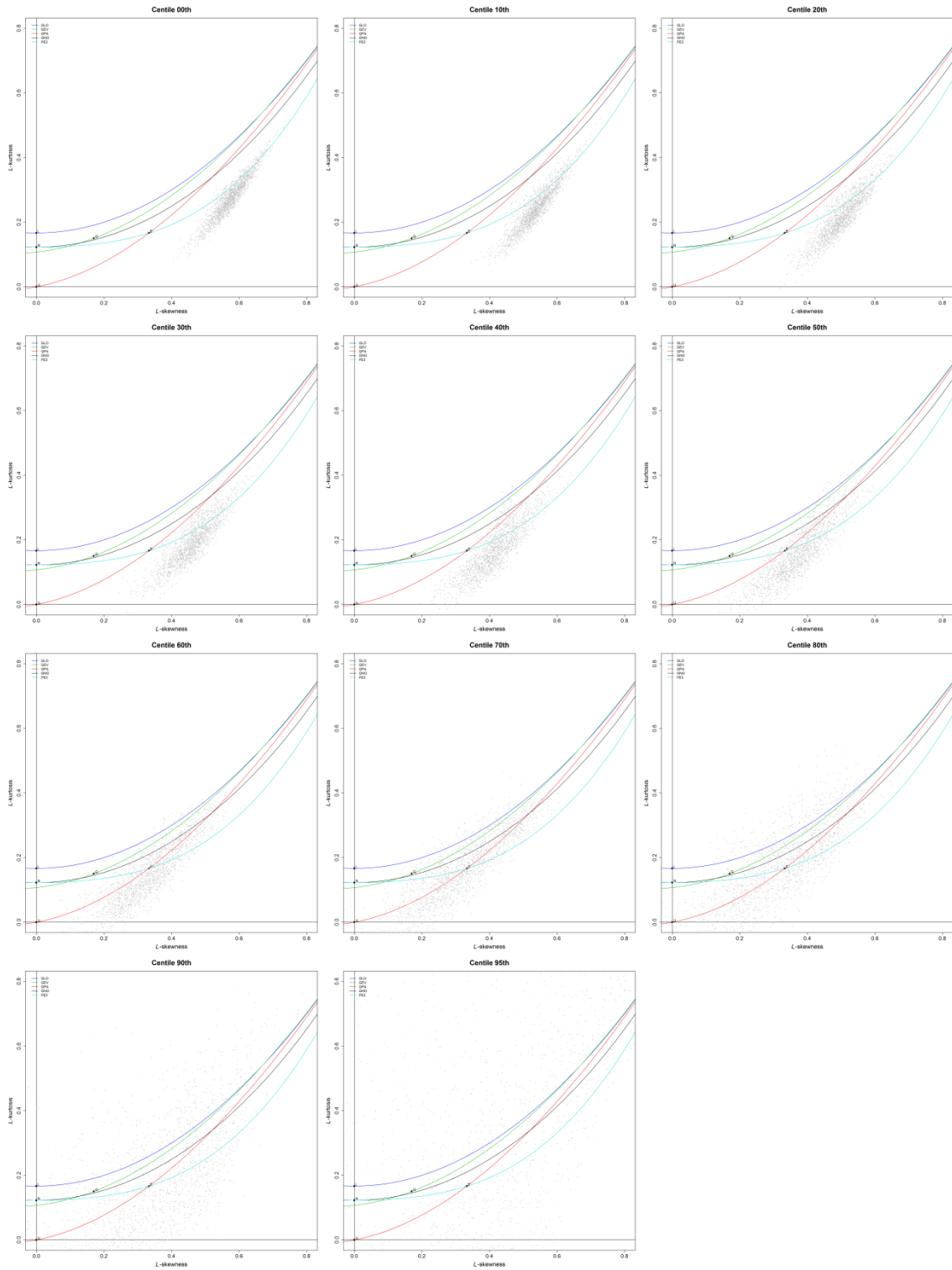
**Supplementary Figure 10: L-moment diagrams for the peak-over-threshold series obtained from the 12-month SPI duration series**



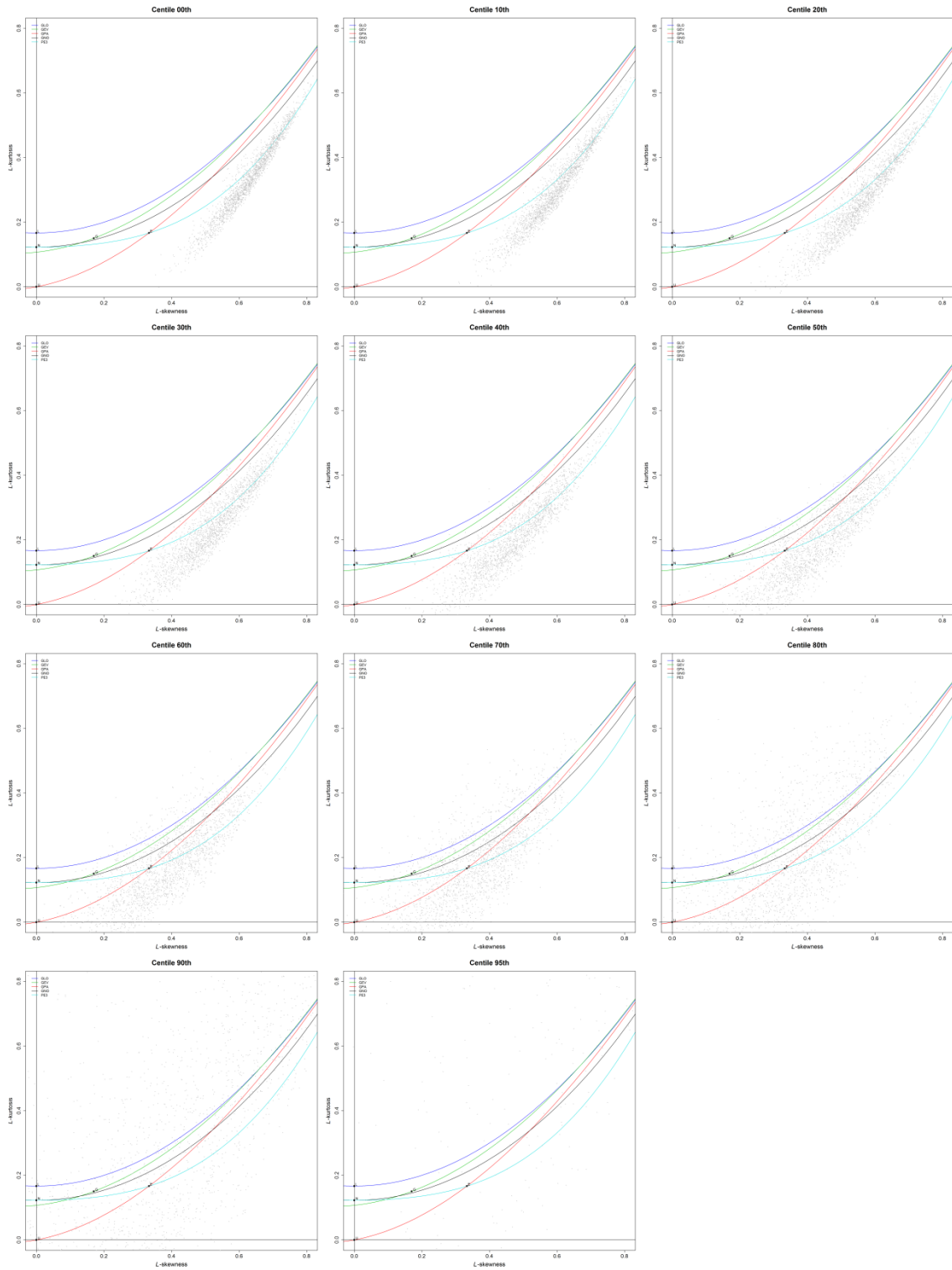
**Supplementary Figure 11: L-moment diagrams for the peak-over-threshold series obtained from the 1-month SPI magnitude series**



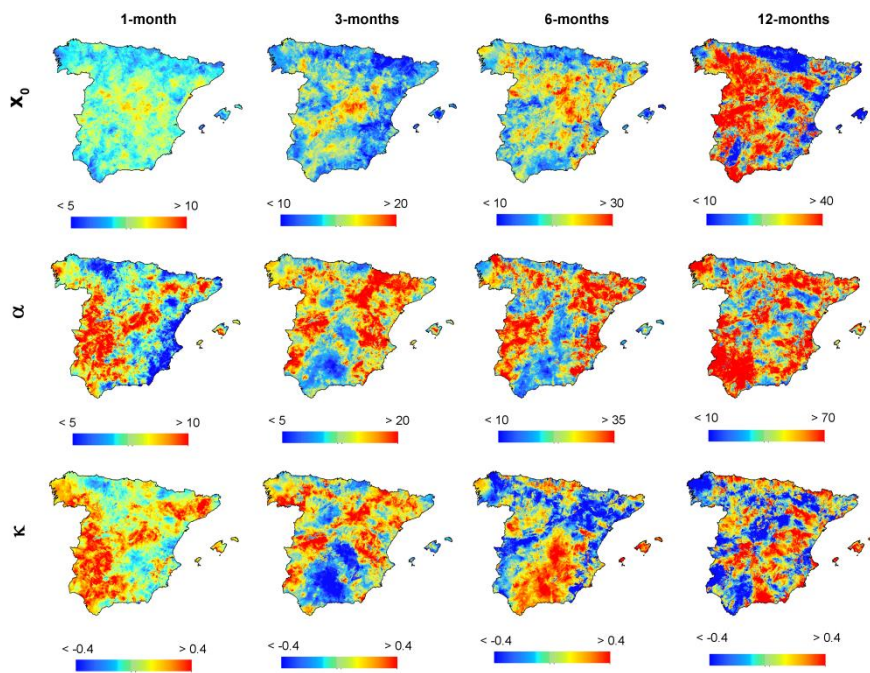
**Supplementary Figure 12: L-moment diagrams for the peak-over-threshold series obtained from the 3-month SPI magnitude series**



**Supplementary Figure 13: L-moment diagrams for the peak-over-threshold series obtained from the 6-month SPI magnitude series**

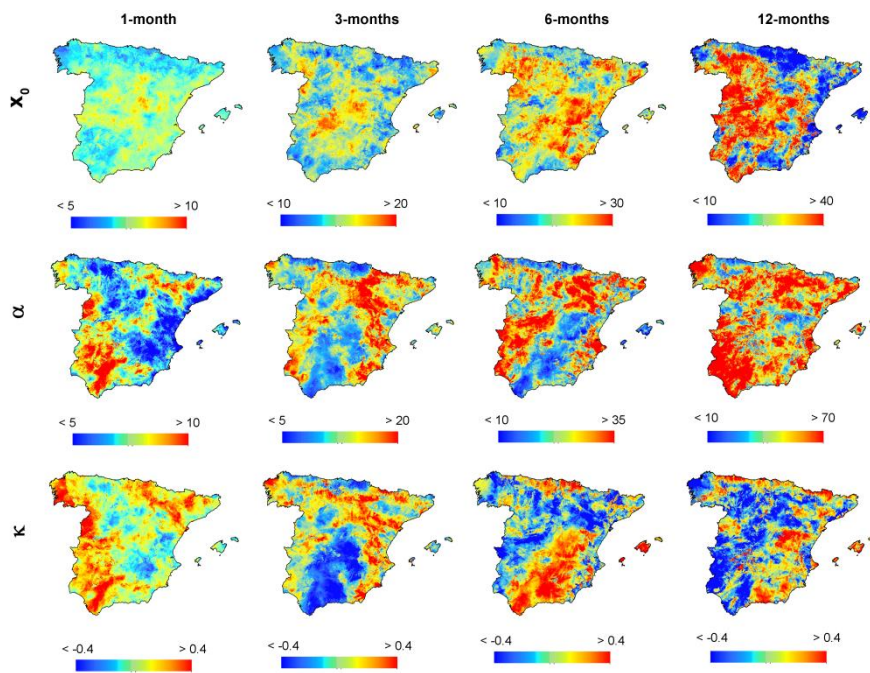


**Supplementary Figure 14: L-moment diagrams for the peak-over-threshold series obtained from the 12-month SPI magnitude series**

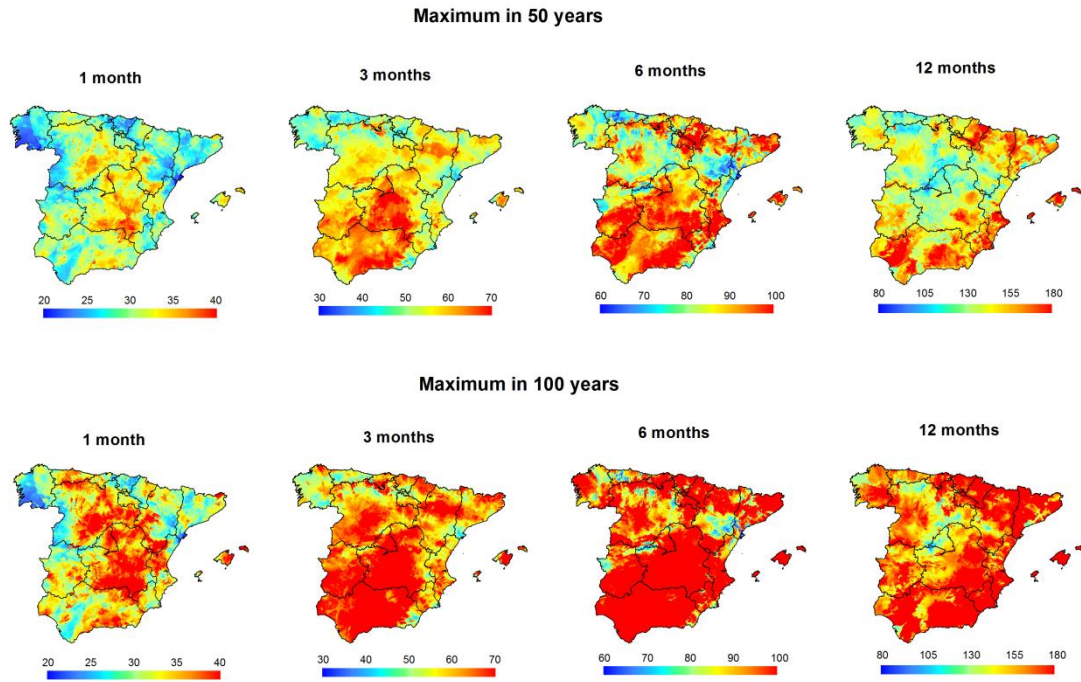


**Supplementary Figure 15: Spatial distribution of the parameters of the GP distribution for the SPI magnitude series**

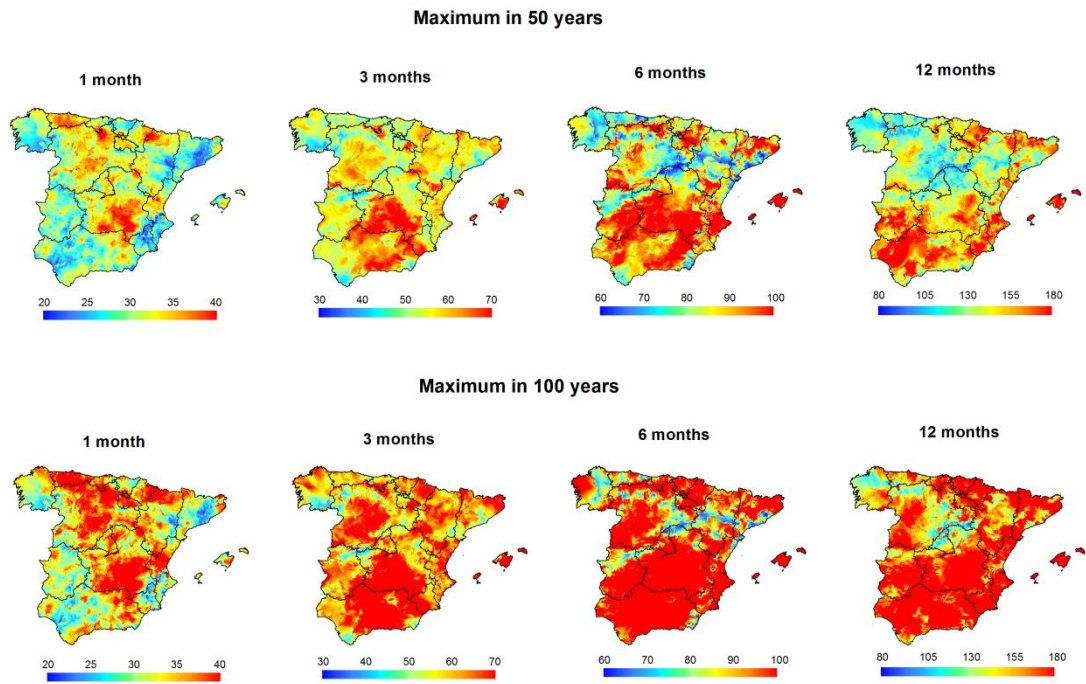




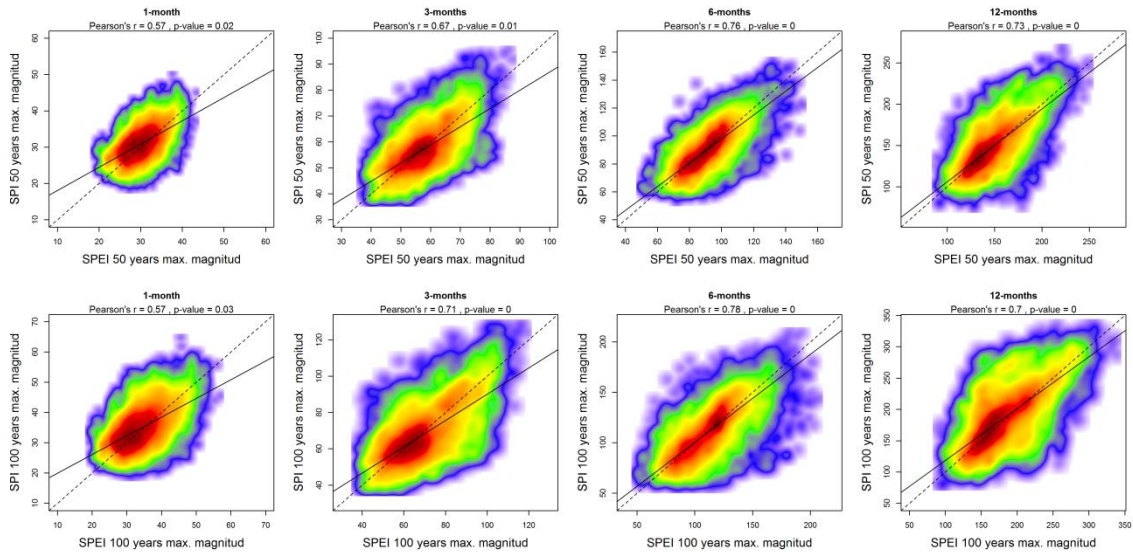
**Supplementary Figure 16: Spatial distribution of the parameters of the GP distribution for the SPEI magnitude series**



**Supplementary Figure 17: Spatial distribution of the maximum drought magnitude (in SPEI units) from the 1-, 3-, 6- and 12-month SPEI series in a period of 50 and 100 years.**



**Supplementary Figure 18: Spatial distribution of the maximum drought magnitude (in SPI units) from the 1-, 3-, 6- and 12-month SPI series in a period of 50 and 100 years.**



**Supplementary Figure 19: Scatterplots showing the relationship between the maximum drought duration (in weeks) expected in a period of 50 and 100 years considering 1-, 3-, 6- and 12- SPEI and the SPI. Colors represent the density of points, with red denoting the highest density. Given the large sample used, the significance of the Pearson's r coefficients was estimated by means of a Montecarlo approach using  $10^3$  random samples, with each sample containing 30 cases.**