

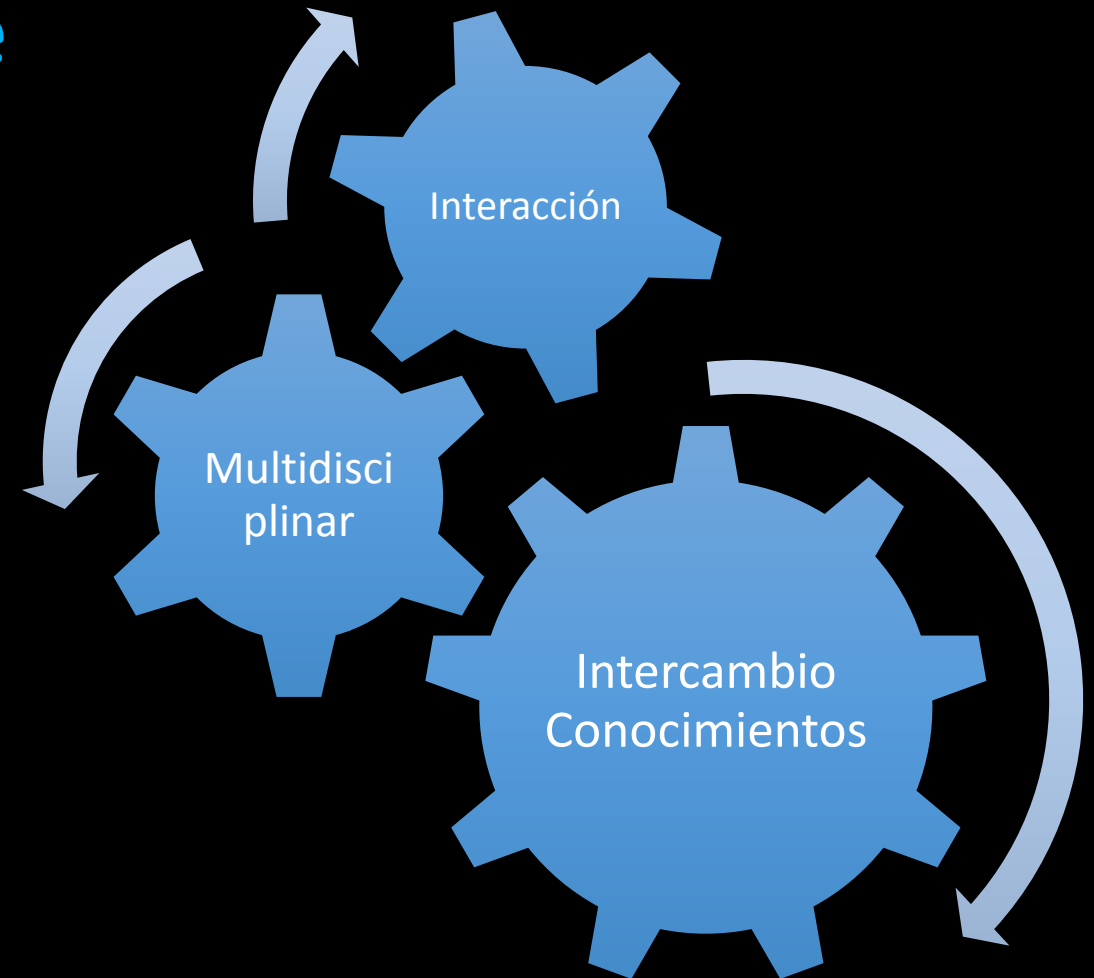


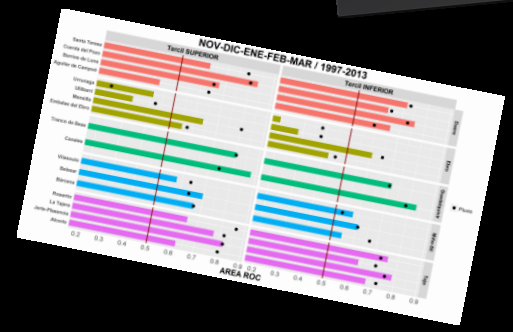
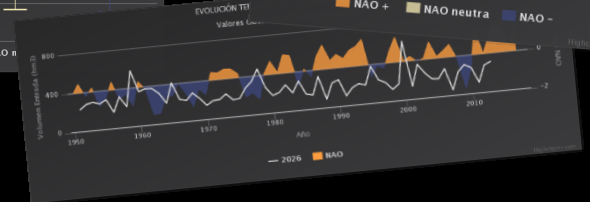
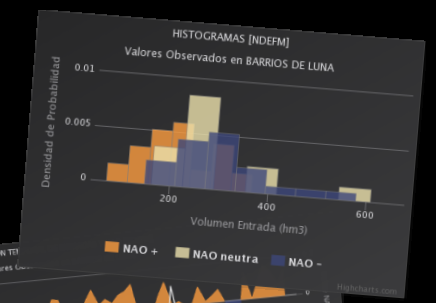
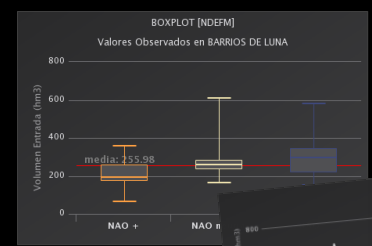
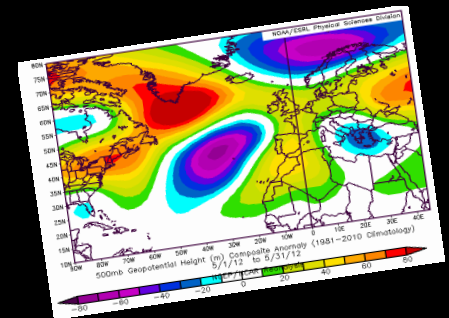
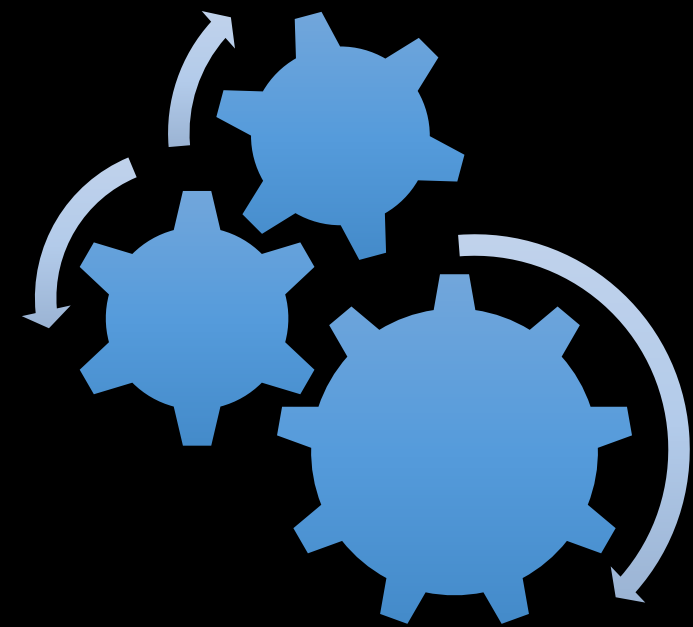
Herramienta Web de Ayuda a la Gestión de los Embalses en España

I. Abia *et al.*

- S-ClimWaRe: Introducción
- Caja de Herramientas

S-ClimWaRe: Seasonal Climate Predictions in Support of Water Reservoirs Management

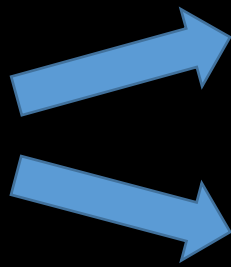




Caja de Herramientas

Consideraciones previas

NAO

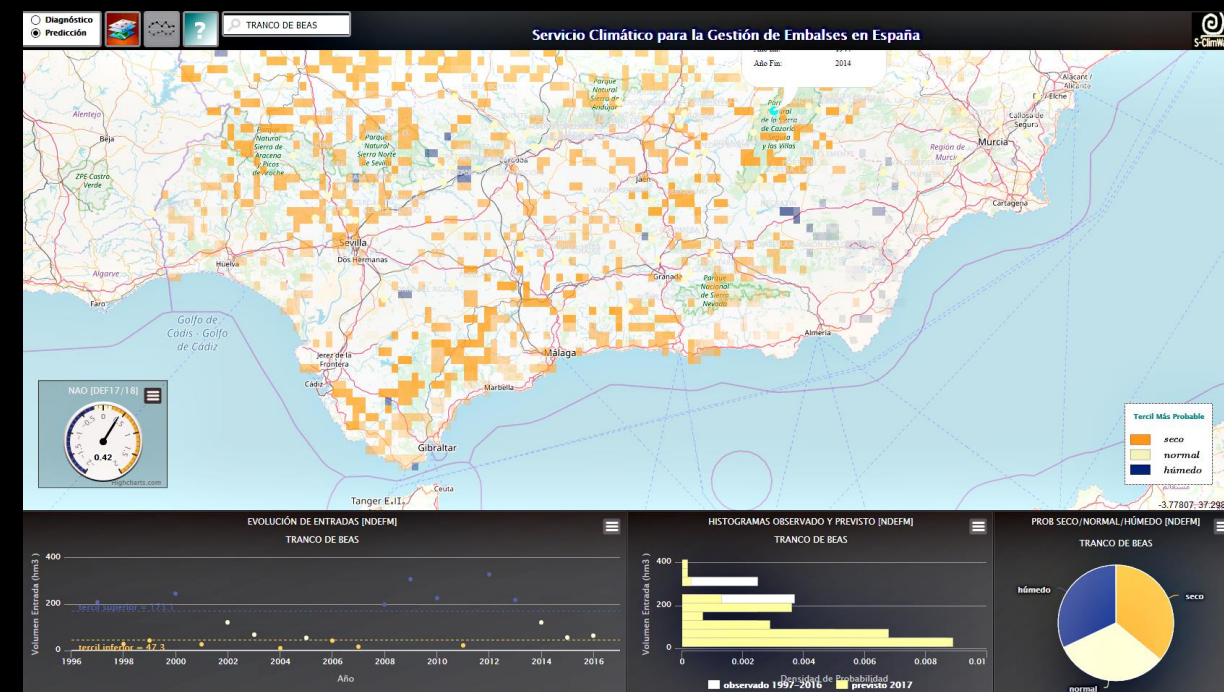
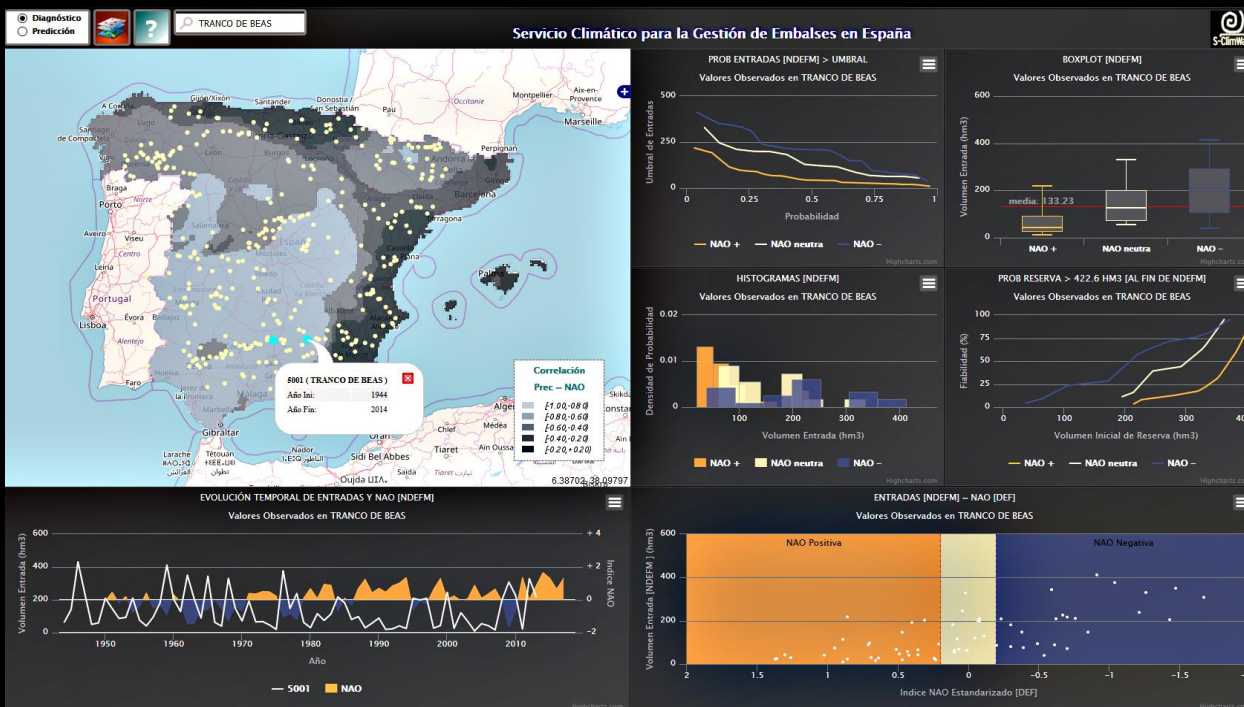


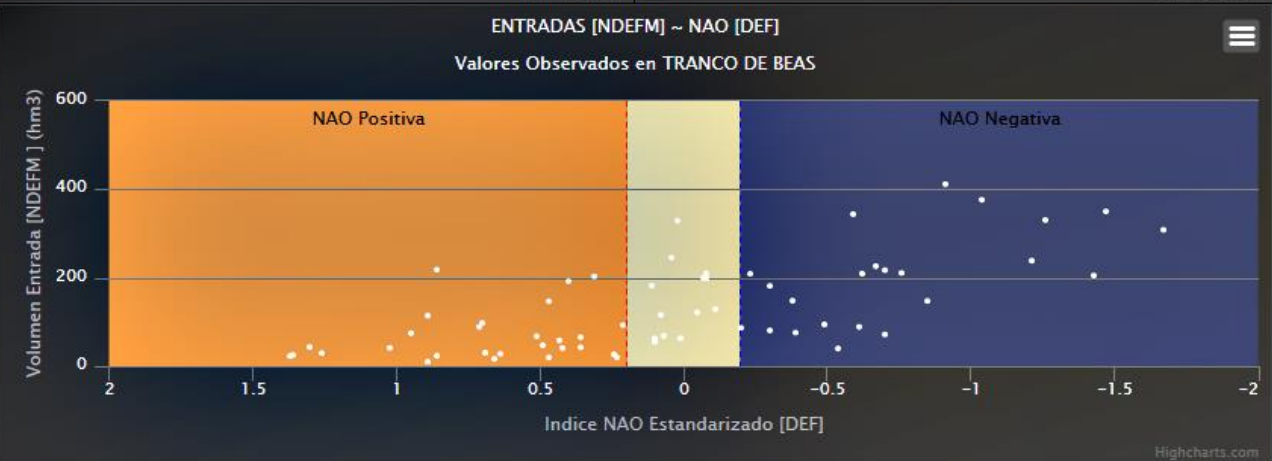
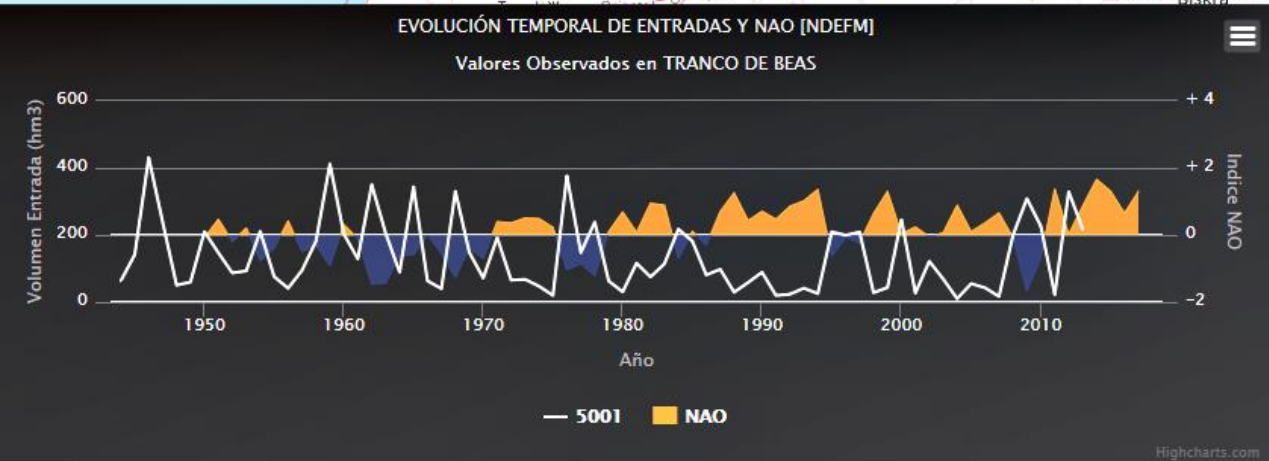
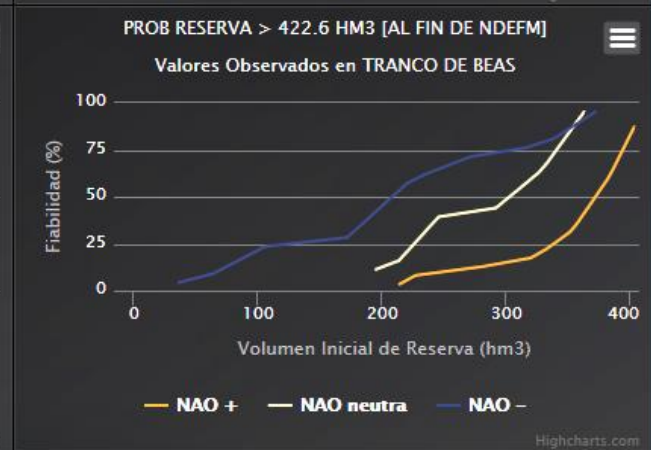
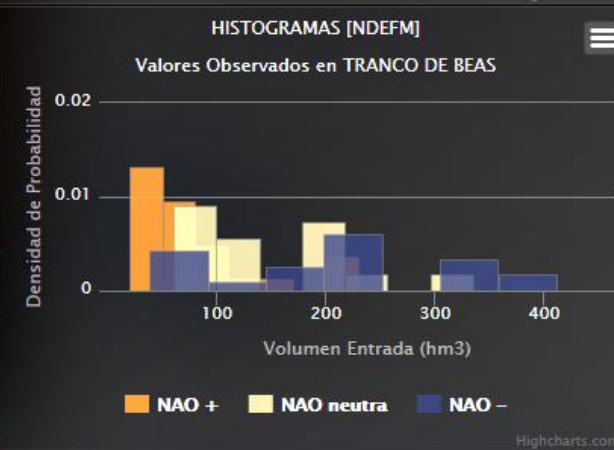
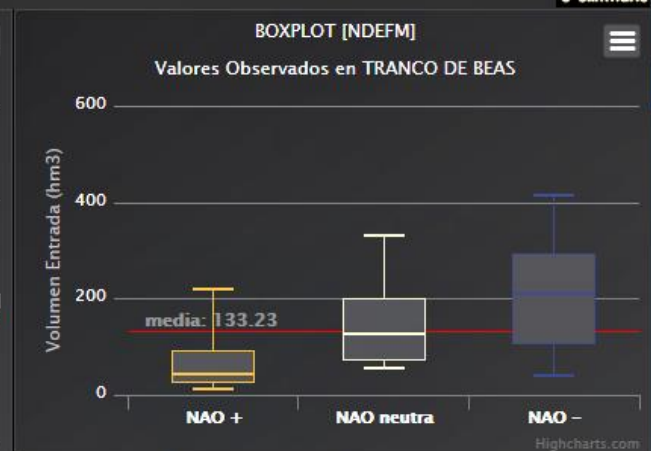
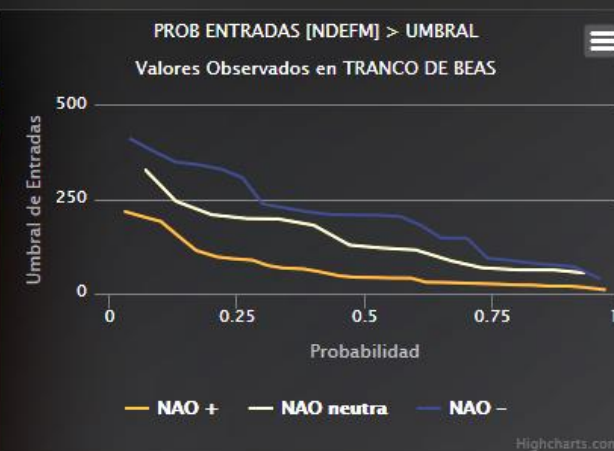
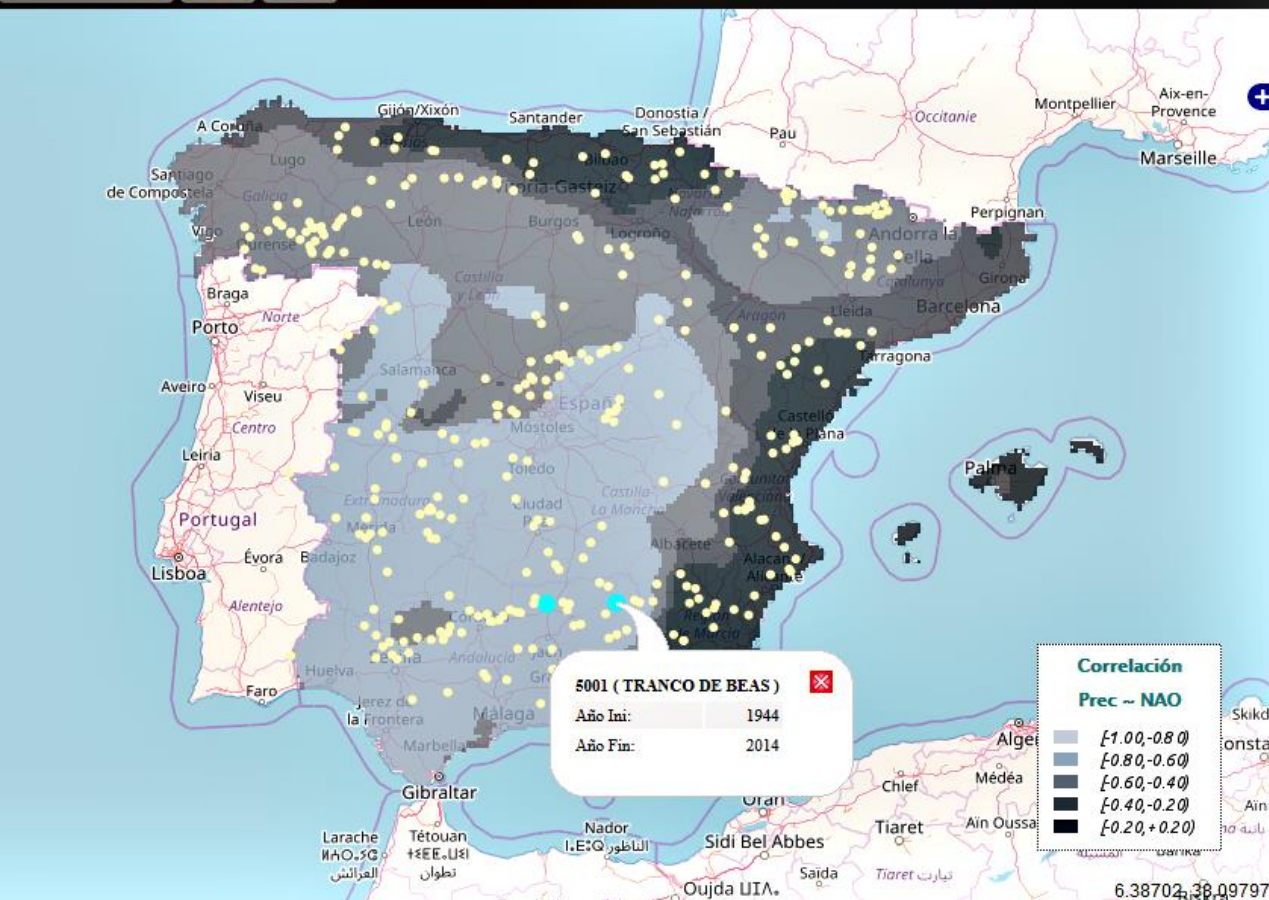
Aportaciones

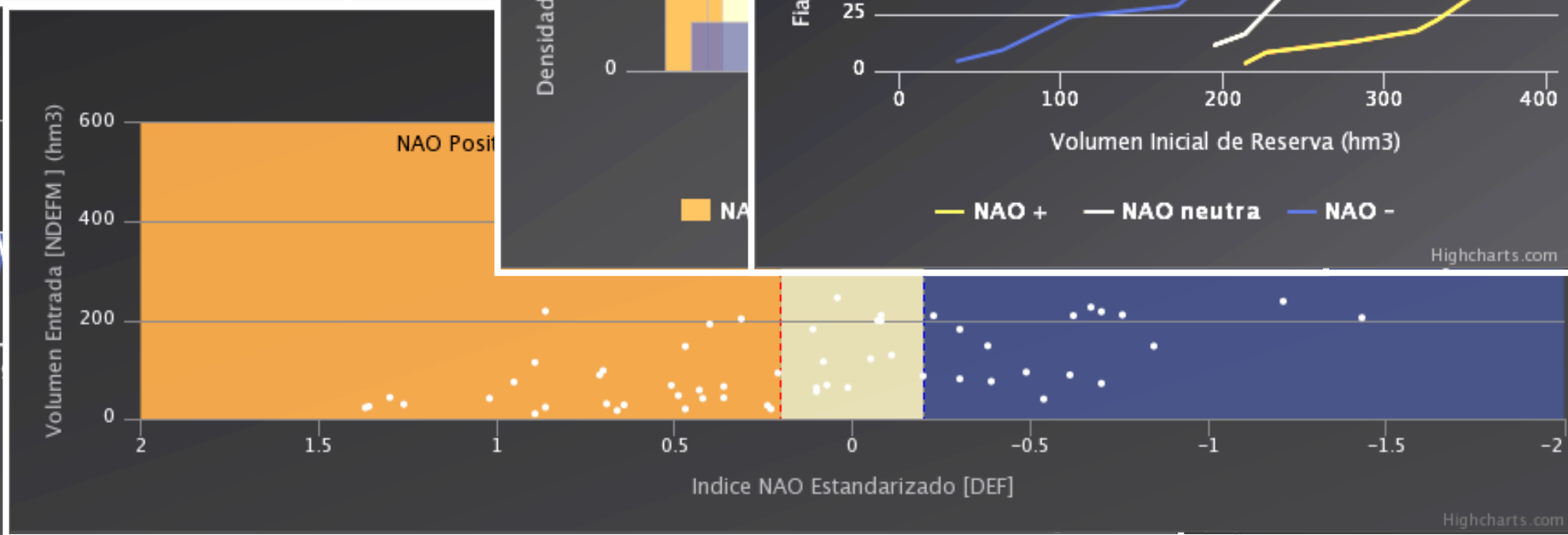
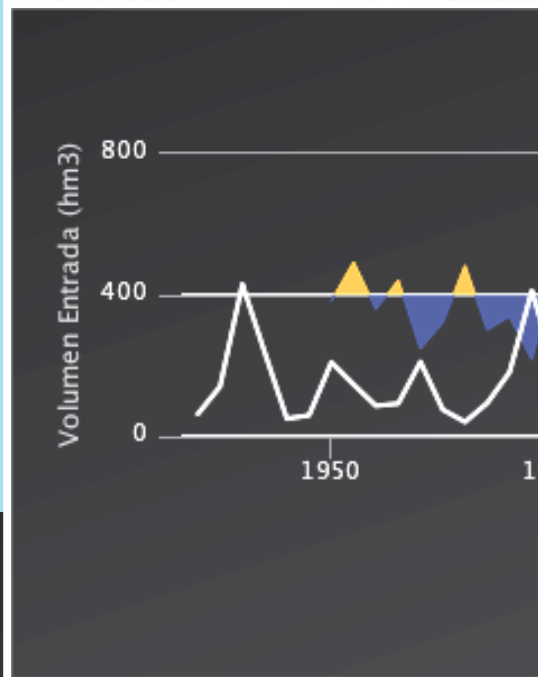
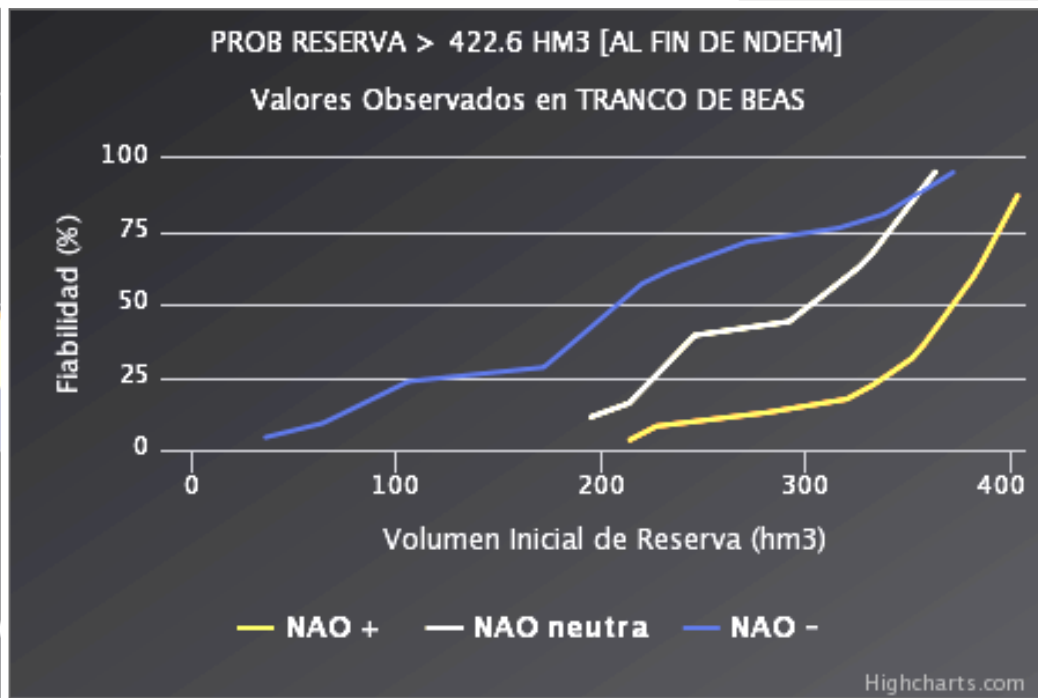
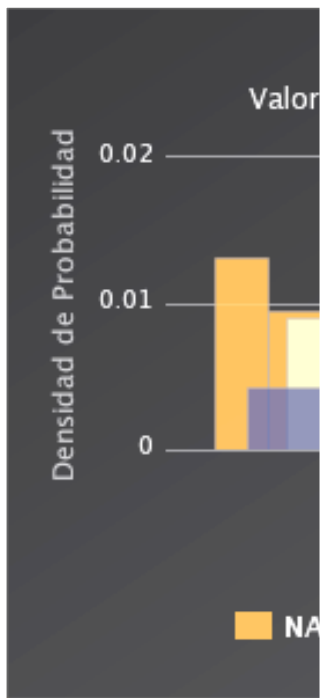
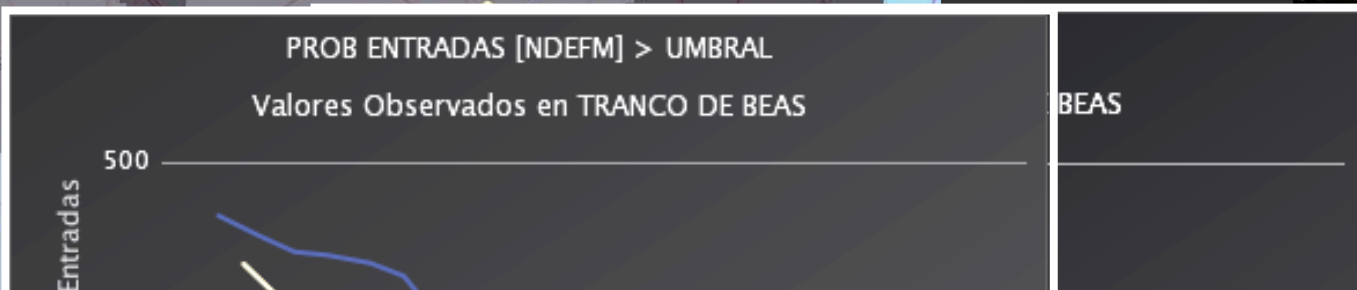
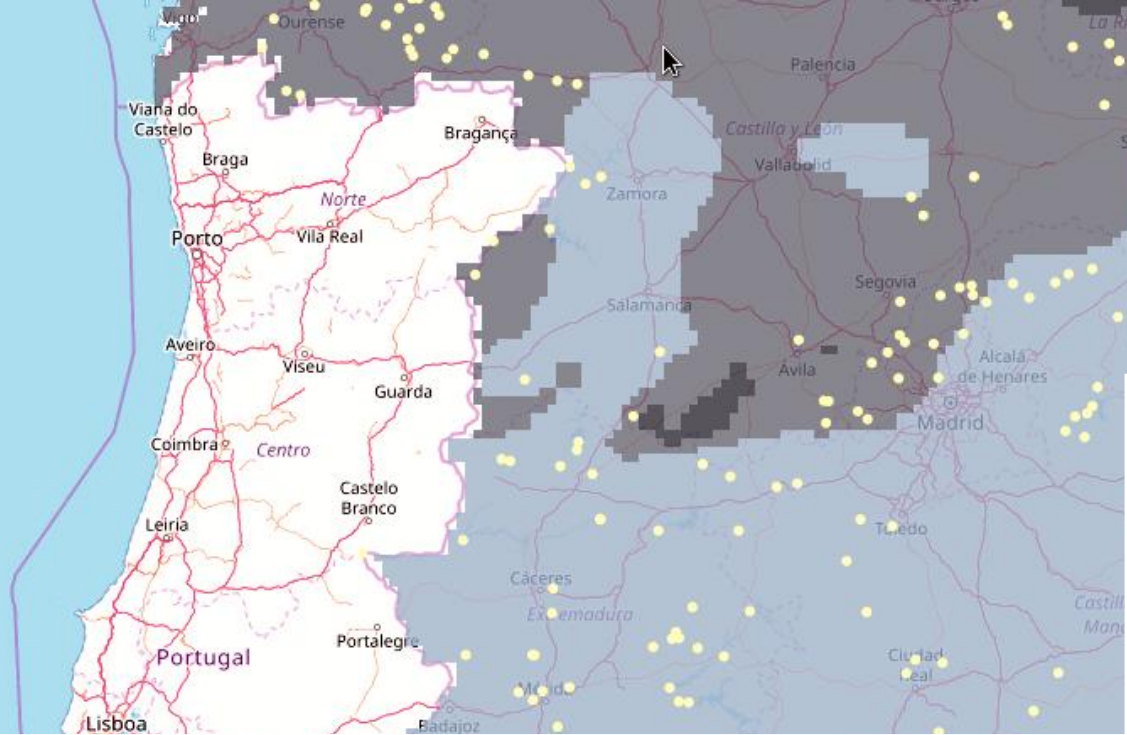
Precipitación (5 km / 1951-2017)

Predecibilidad -> Invierno extendido (NDJFM)

Caja de Herramientas

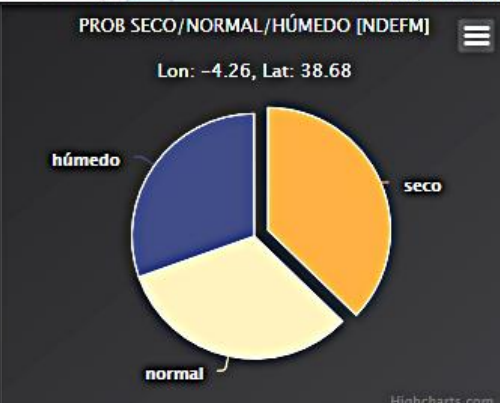
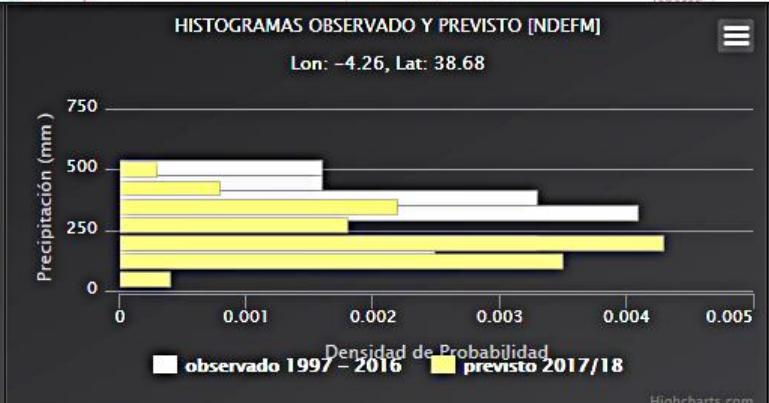
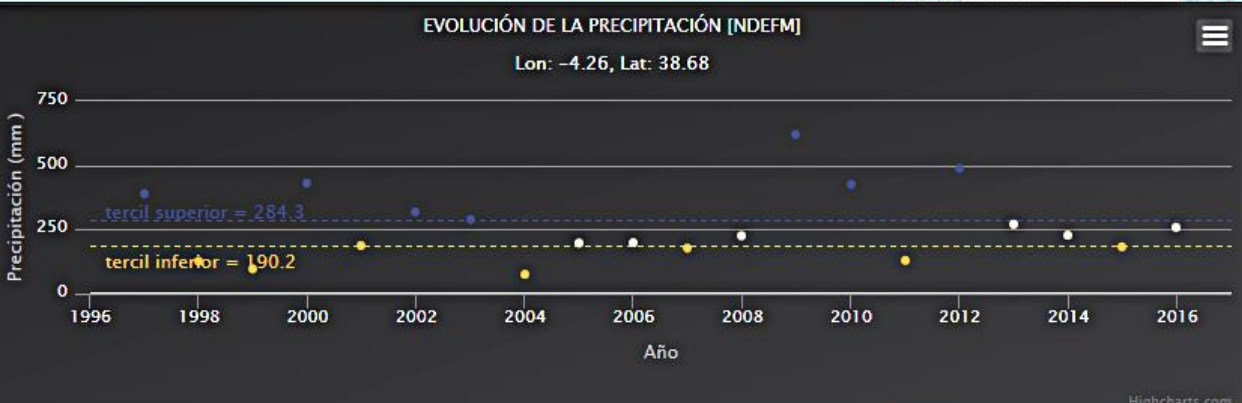
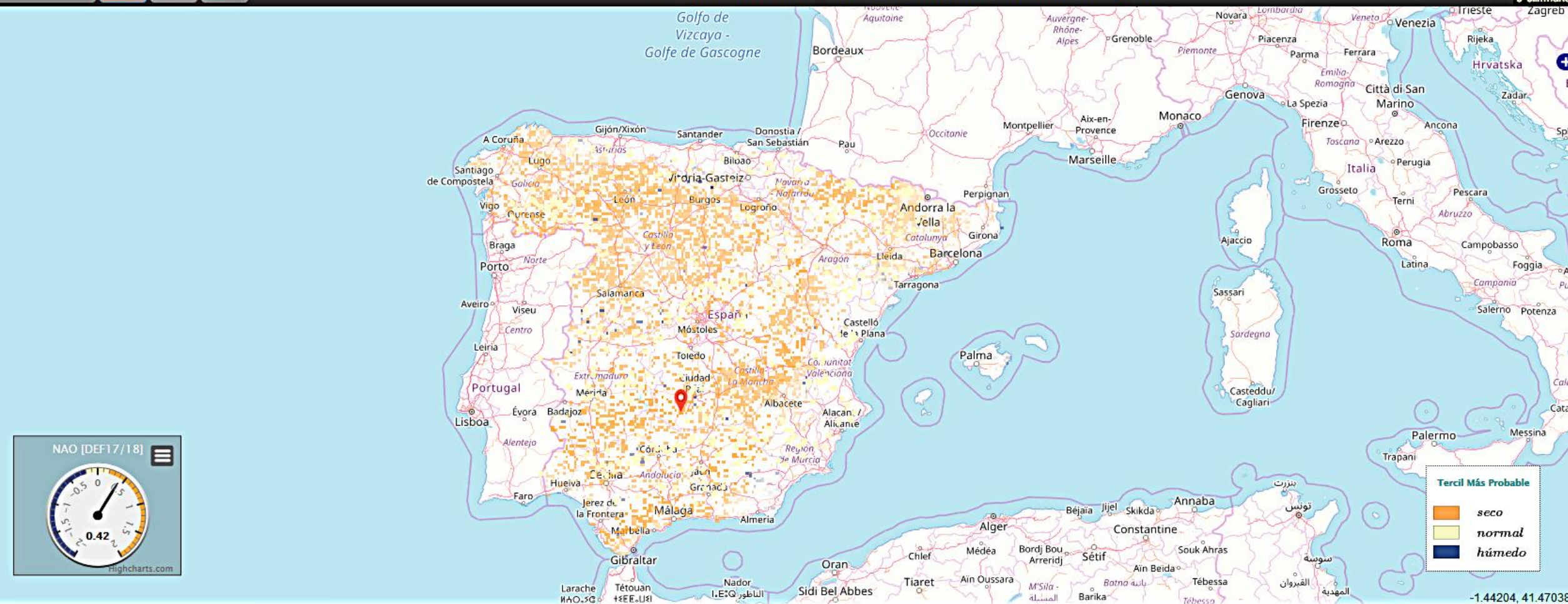


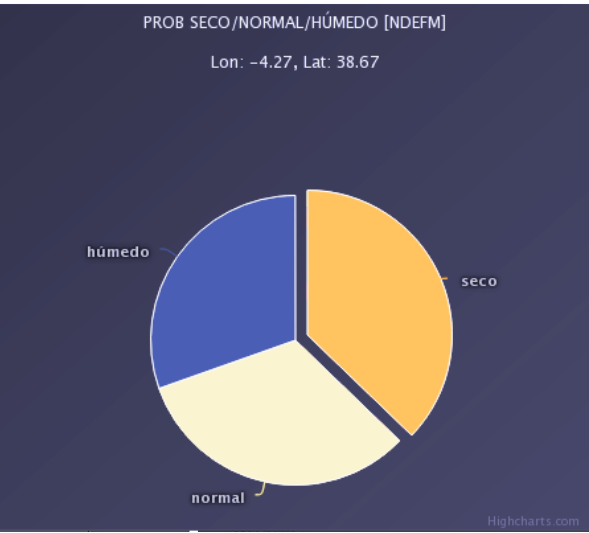
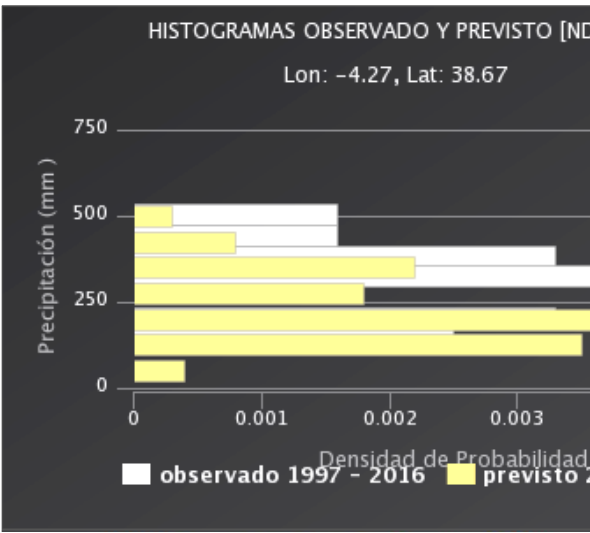
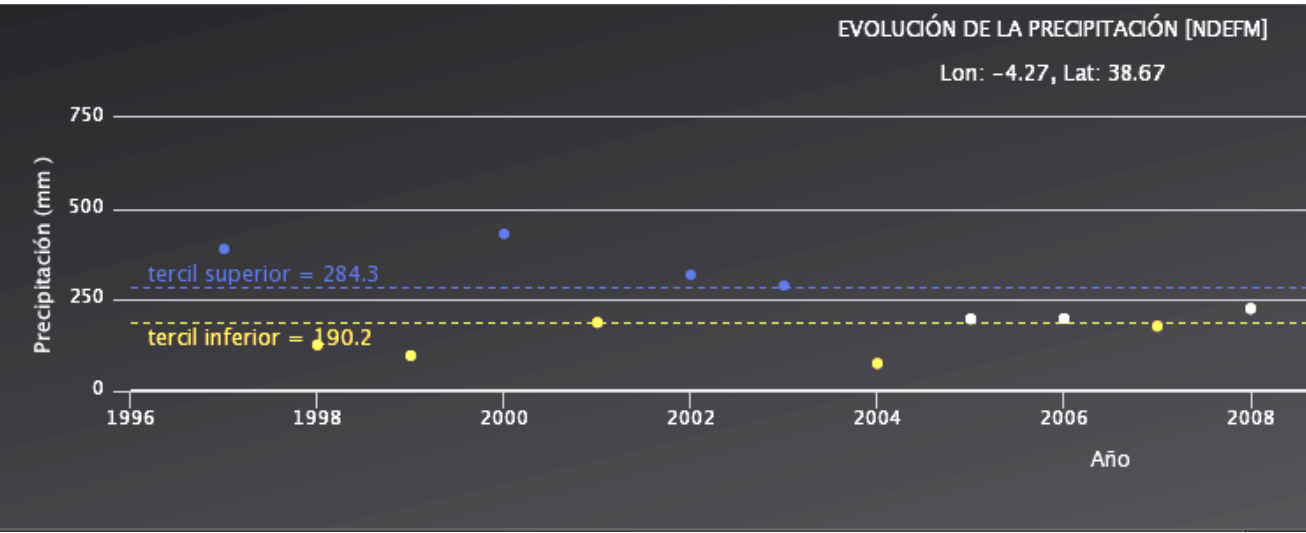
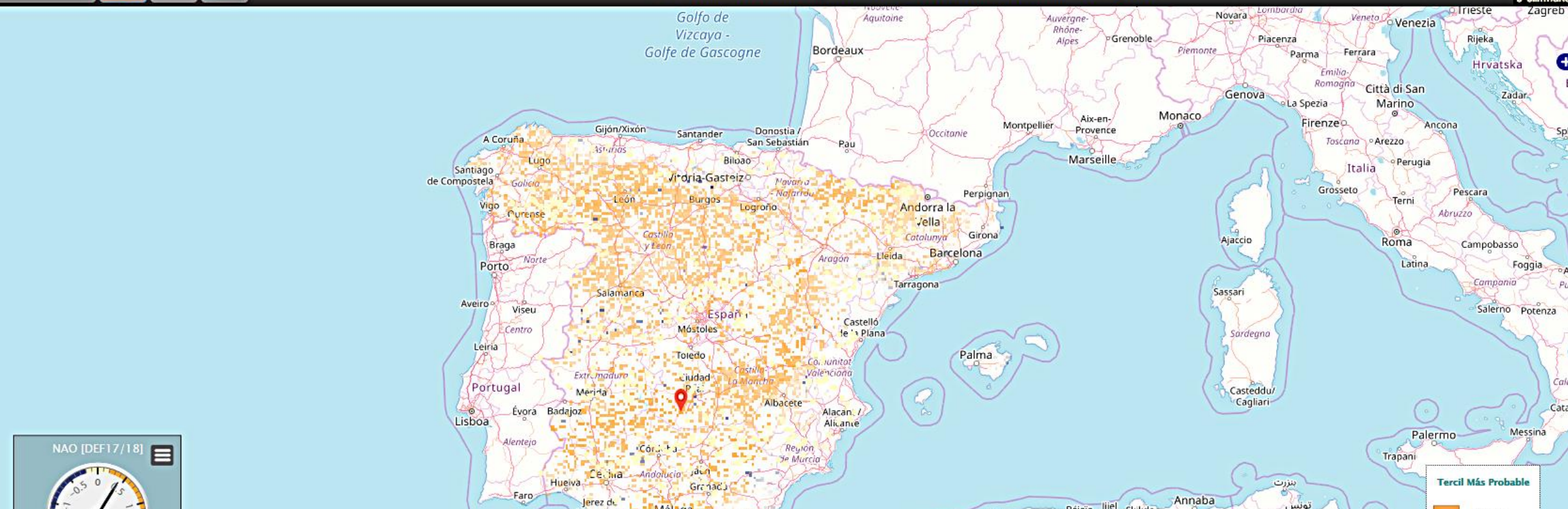






Servicio Climático para la Gestión de Embalses en España





Documentos relacionados

- Voces. J., et al., 2016. Sistema estadístico de predicción estacional para la gestión de los embalses en España (Statistical seasonal forecasting system for the management of reservoirs in Spain). Nota Técnica nº 21 AEMET.
http://www.aemet.es/es/conocermas/recursos_en_linea/publicaciones_y_estudios/publicaciones/detalles/NT_21_AEMET