

Supporting Information

Interactions Between Tropical Cyclones: The Case of Hurricanes Michael and Leslie and Predictive Uncertainty

M. López-Reyes^{1,2}, J.J. González-Alemán³, C. Calvo-Sancho⁴, P. Bolgiani², M. Sastre², M.L. Martín^{4,5}

¹Astronomy and Meteorology Institute, Physics Department, University of Guadalajara, Guadalajara, Mexico.

²Department of Earth Physics and Astrophysics, Faculty of Physics, Complutense University of Madrid, Madrid, Spain.

³Agencia Estatal de Meteorología (AEMET), Department of Development and Applications, Madrid, Spain.

⁴Department of Applied Mathematics, Faculty of Computer Engineering, University of Valladolid, Spain.

⁵Institute of Interdisciplinary Mathematics (IMI), Complutense University of Madrid, Madrid, Spain.

Contents of this file

Figure S1 to S5

Introduction

This supporting information includes Figures S1 to S4 in which different atmospheric fields are presented to enhance the main text comprehension. In Figure S1 shows the visible satellite image associated with hurricanes Michael and Leslie in the North Atlantic Ocean. The rest of figures (Figs S1-S3) presented different atmospheric fields whose description is in main text.

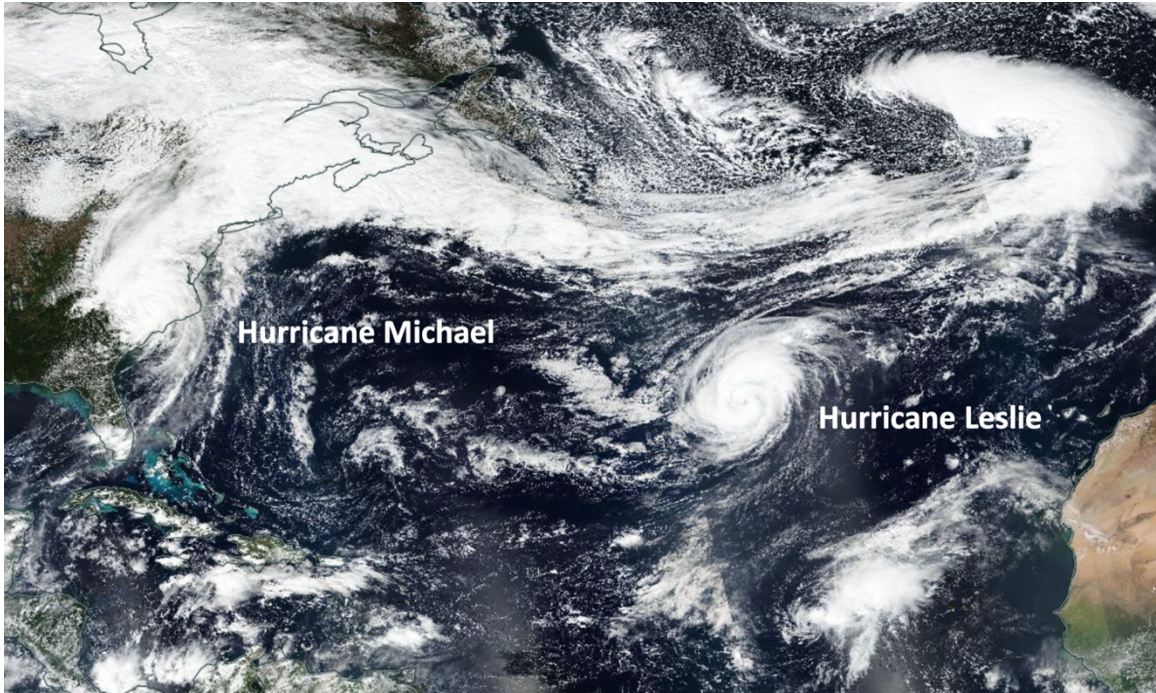


Figure S1. Satellite imagery (True Colour: Red =Band I1, Green =Band M4, Blue =Band M3, from EOSDIS Worldview/MODIS). Hurricane Michael on the East Coast of the United States, and Hurricane Leslie in the north central Atlantic Ocean.

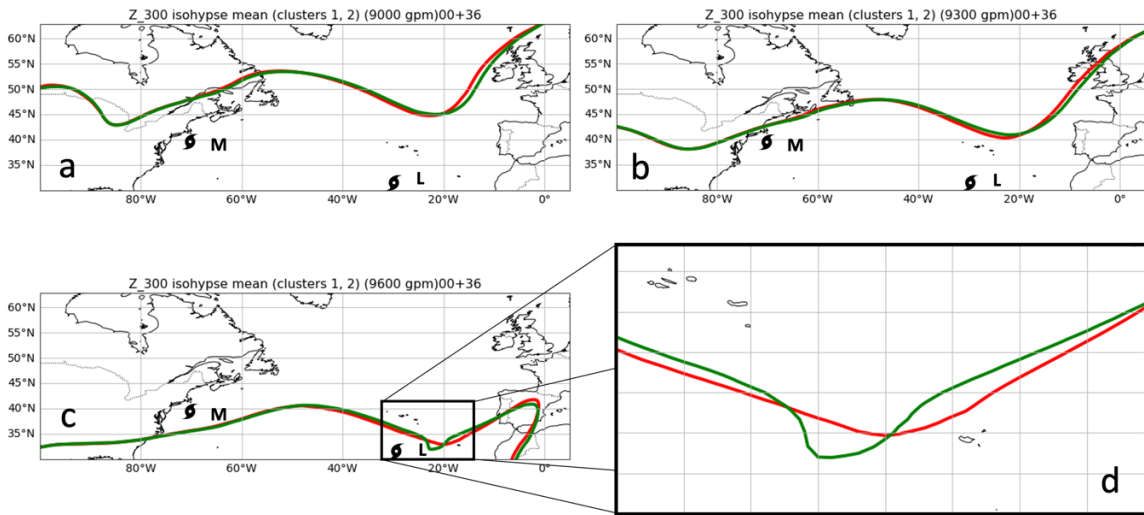


Figure S2. Isohypse mean of the composite of cluster 1 (red contour) and cluster 2 (green contour) at (a) 9000 gpm, (b) 9300 gpm and (c) 9600 gpm, at 00+36 h.

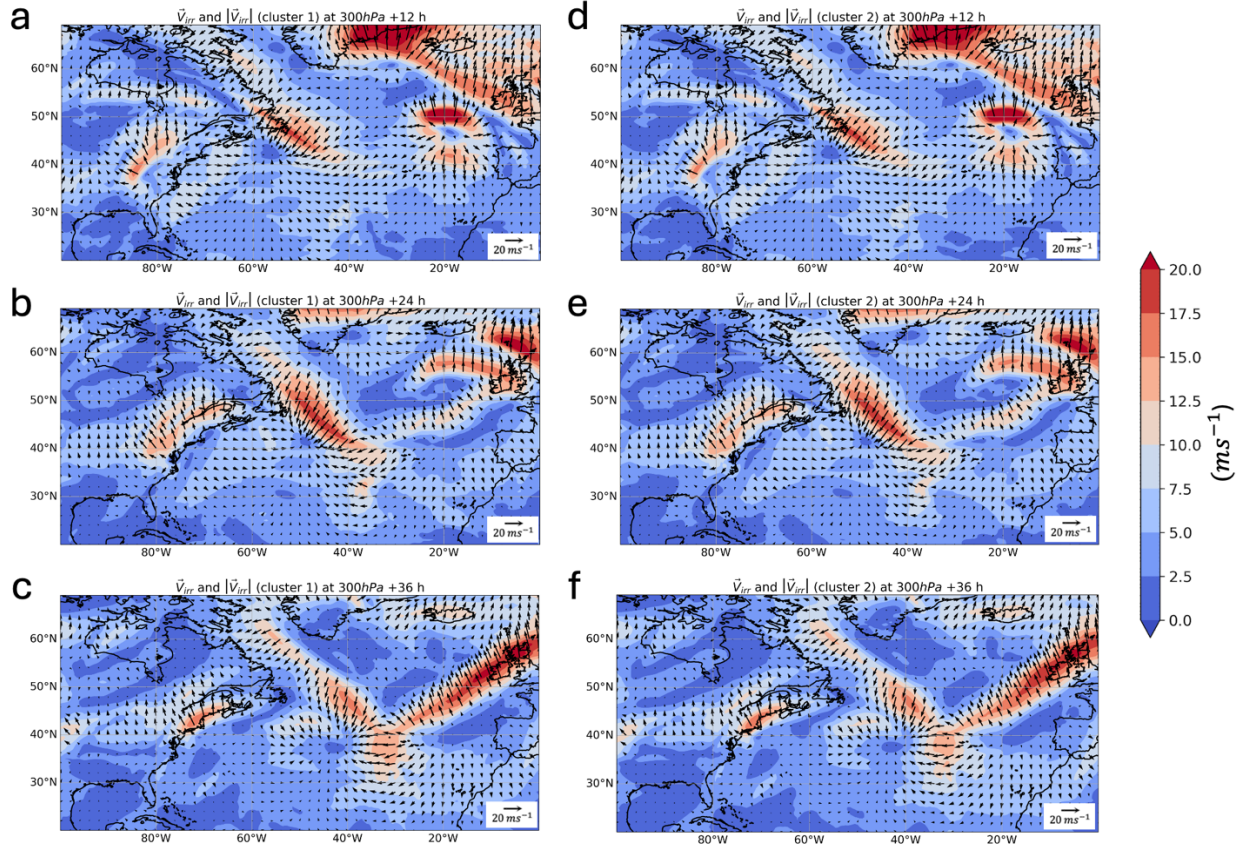


Figure S3. Irrotational wind vectors (ms^{-1}) and magnitude (shaded; ms^{-1}) for cluster 1 (a, b, and c) and cluster 2 (d, e, and f) at 300 hPa at +12, +24 and +36 h.

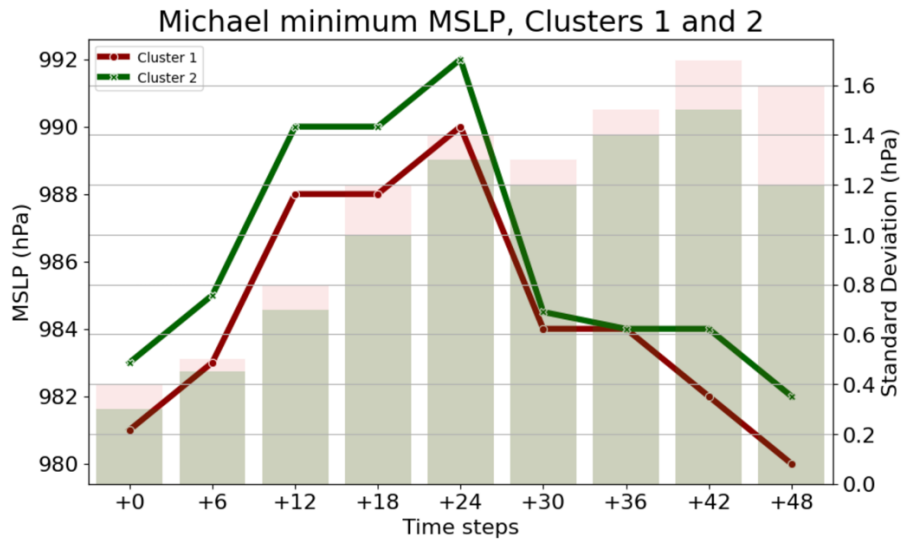


Figure S4. Michael minimum MSLP (lines) and STD (bars) of each cluster between initialization and +48 h.

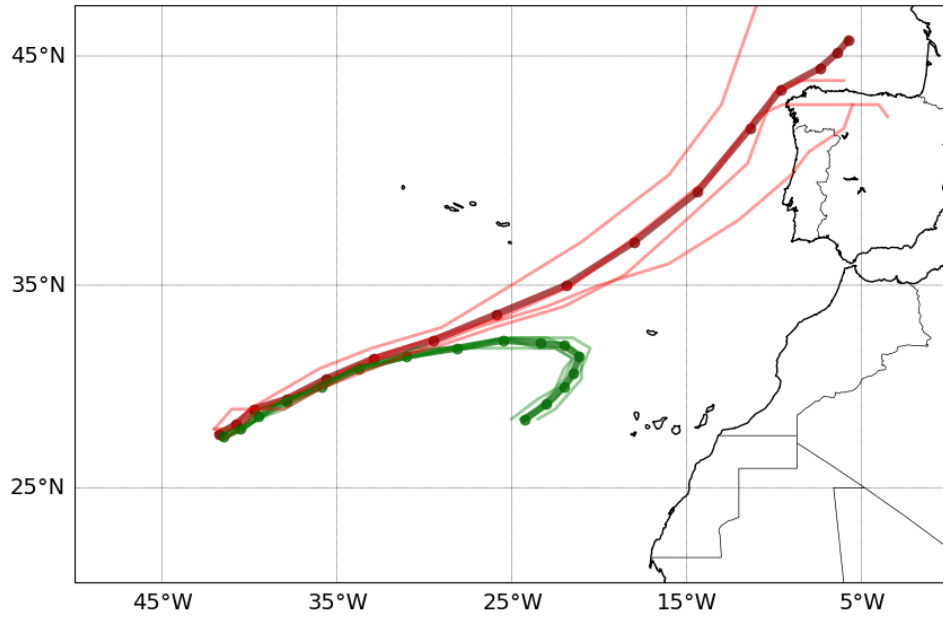


Figure S5. As in Figure 2a but with Leslie's extreme trajectories of P_{80} cluster-1 (red) and P_{20} cluster-2 (green) along with the mean of the extreme trajectories (bold lines) for both clusters.